



## 7 Ravensbourne Circuit Dural NSW

4  2  2 

Occupying an elevated position in the family friendly Elouera Estate, this well-maintained dual-level residence provides a comfortable and spacious retreat for growing families. The thoughtfully designed lower level offers multiple living zones, including a formal lounge upon entry, a dedicated dining area and a generous open-plan living space, creating plenty of room for both relaxation and entertaining.

The centrally positioned kitchen overlooks the backyard and features a gas cooktop, built-in pantry and generous bench space for everyday functionality. Glass sliding doors from the rear living area flow out to a private paved patio, perfect for alfresco dining or hosting guests. The backyard is designed for low-maintenance living, complete with easy-care gardens.

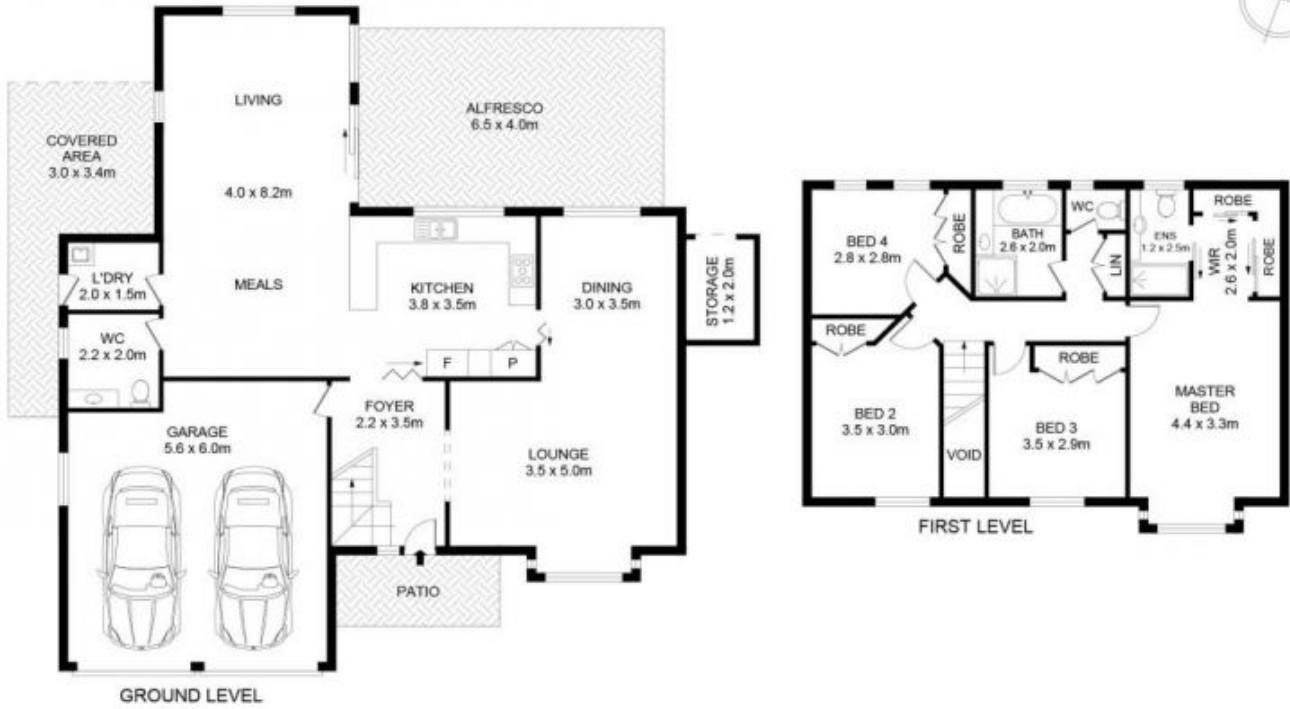
**Price** : \$2,125,000  
**Land Size** : 452 sqm  
**View** : <https://www.guardianrealty.com.au/sale/nsw/hills/dural/residential/house/8648493>



**Joel Green**  
0408 293 262



**Ben Chetcuti**  
0475 909 787



## 7 Ravensbourne Circuit, Dural



**Disclaimer**  
Floor Plan measurements are approximate and are for illustrative purposes only. While we cannot doubt the floor plans accuracy, we make no guarantee, warranty or representation as to the accuracy and completeness of the floor plan

