



6 Joylyn Road Annangrove NSW

5  5  4 

Positioned high on the hill and set across five arable acres, this exceptional executive residence delivers privacy, space and sweeping elevated views in a truly resort-style setting. Beautifully landscaped grounds frame the home, while light-filled interiors create an immediate sense of luxury and calm.

Designed and finished to an outstanding standard, the home showcases a stunning kitchen appointed with Miele appliances and a generous walk-in butler's pantry, flowing seamlessly into expansive open-plan living and out to the alfresco entertaining zone. Elegant limestone flooring and Grey Ironbark natural hardwood timber flooring enhance the refined aesthetic, complemented by feature bulkheads with concealed LED strip lighting and a striking Real Flame linear fireplace as the centrepiece of the main living area.

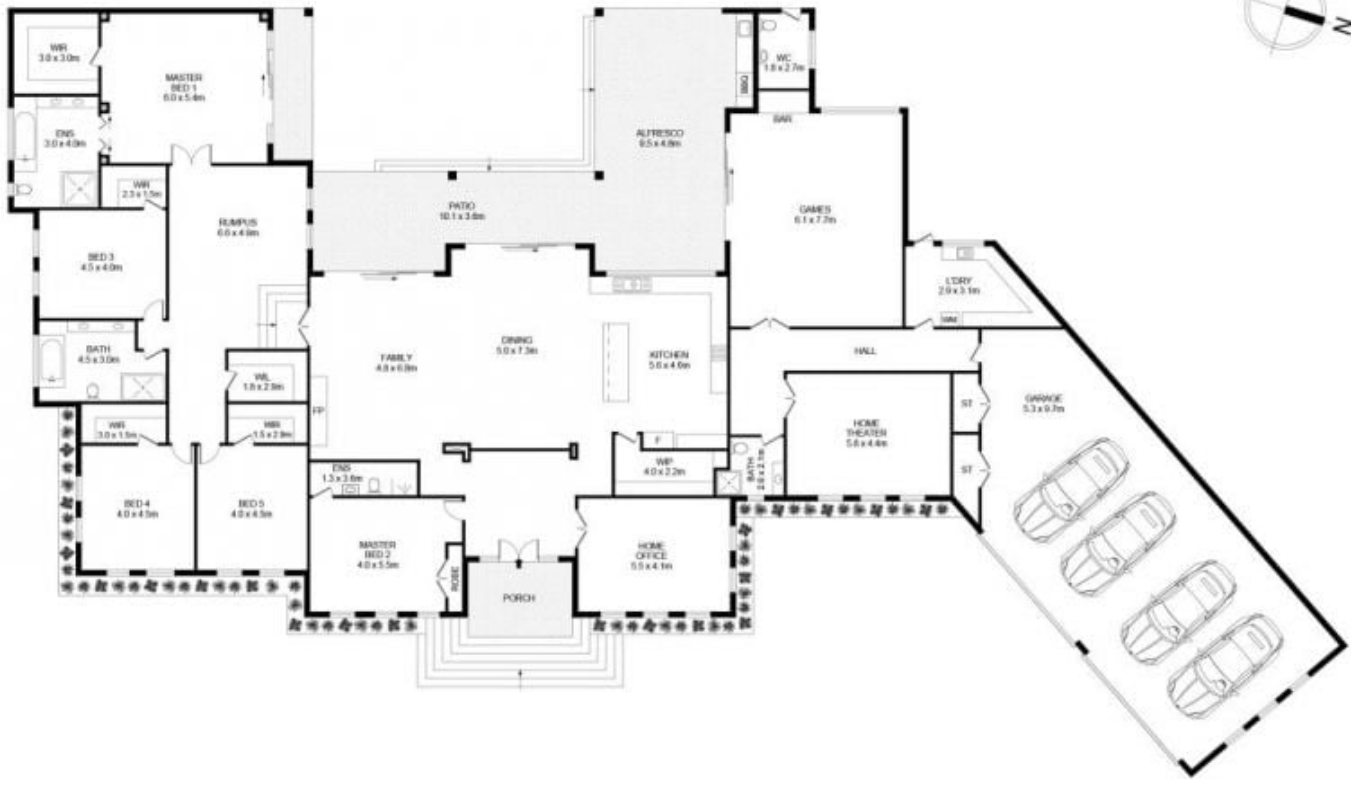
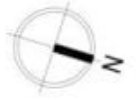
Price : Just Listed
Land Size : 5 Acres
View : <https://www.guardianrealty.com.au/sale/nsw/hills/annangrove/residential/acreagesemirural/8603444>



Ben Jobberns
0402 444 171



Caleb McAdam
0425 886 486



Disclaimer
Floor Plan measurements are approximate and are for illustrative purposes only. While we cannot doubt the floor plans accuracy, we make no guarantee, warranty or representation as to the accuracy and completeness of the floor plan