



**109/33 Main Street Rouse Hill NSW**

2  1  2 

Delivering a lifestyle of style and unrivalled convenience, this sophisticated dual level apartment is the perfect choice for first home buyers or busy professionals. The entry level reveals a light-filled open plan living and dining zone that seamlessly extends to a private rear balcony and courtyard at the entry, ideal for relaxed entertaining or alfresco dining. The generous kitchen is framed by stone benchtops, and features a gas cooktop, island bench setting, and ample storage.

The upper level boasts two well-sized bedrooms with built-in wardrobes, with a contemporary main bathroom featuring floor-to-ceiling tiles serving the home. With supermarkets, shops, restaurants, Rouse Hill Metro station and buses quite literally at the doorstep, this apartment promises a cosmopolitan lifestyle where convenience meets modern luxury.

**Price** : \$ 695,000

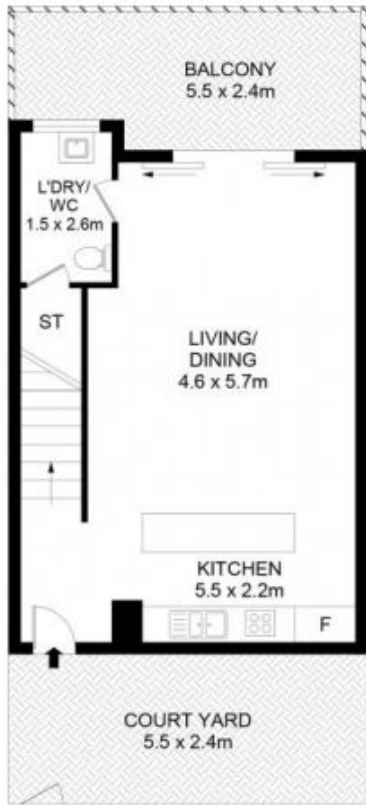
**View** : <https://www.guardianrealty.com.au/sale/nsw/hills/rouse-hill/residential/unit/8504245>



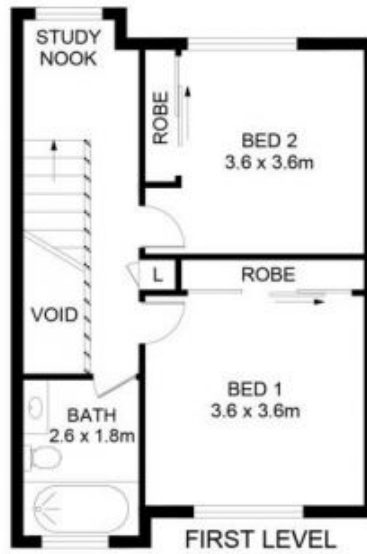
**Joel Green**  
0408 293 262



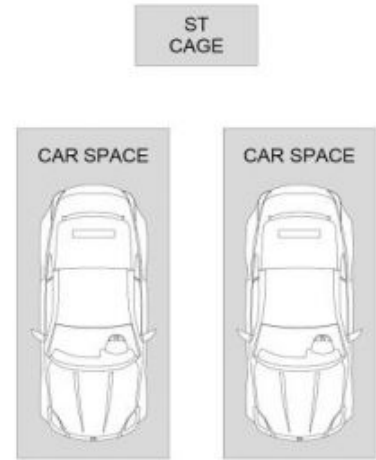
**Ben Chetcuti**  
0475 909 787



ENTRY LEVEL



FIRST LEVEL



109/33 Main Street, Rouse Hill



Disclaimer  
Floor Plan measurements are approximate and are for illustrative purposes only. While we cannot doubt the floor plans accuracy, we make no guarantee, warranty or representation as to the accuracy and completeness of the floor plan

