



21 Sheila Street Grantham Farm NSW

4  2  1 

This stunning single level home is a premier residence in the flourishing suburb of Grantham Farm. Its functional layout affords space for everyone to enjoy in the most modern of surrounds. An open lounge room under a bulkhead ceiling is thoughtfully set apart from the main living areas.

The Caesarstone kitchen articulates the living room and meals area, boasting immense storage with a walk-in pantry. Stainless steel appliances include a 900mm gas cooktop and oven, while the bench wraps around to include bar seating. The meals area steps out to a covered alfresco which is perfect for year-round dining. It meets level lawn, edged with professionally landscaped gardens requiring minimal maintenance.

This appealing home is a walk to buses and minutes to

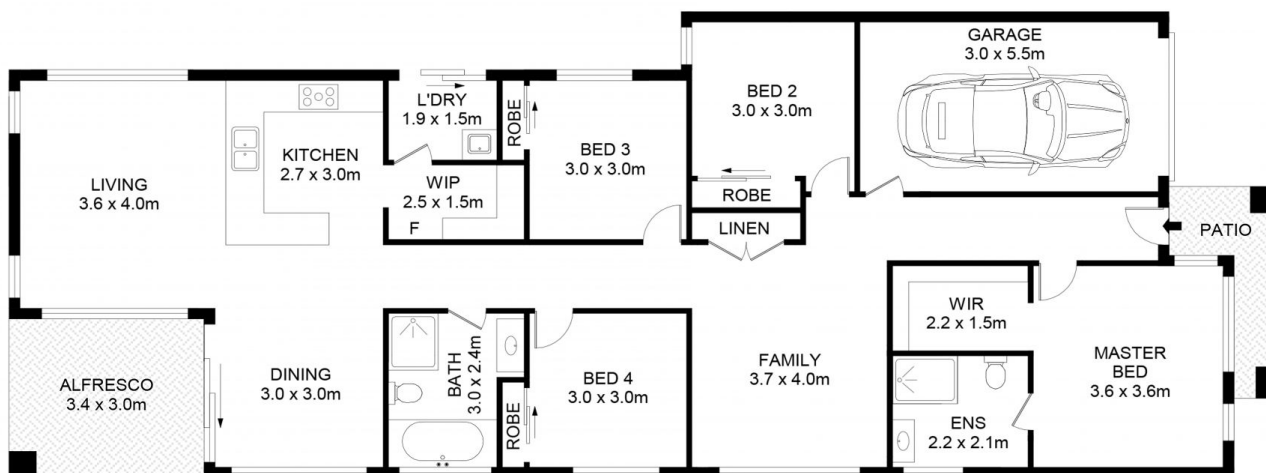
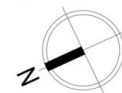
Price : \$ 1,100,000
Land Size : 351 sqm
View : <https://www.guardianrealty.com.au/sale/nsw/-/grantham-farm/residential/house/8206576>



Joel Green
0408 293 262



Preston Stewart
0468 848 105



21 Sheila Street, Grantham Farm



Disclaimer

Floor Plan measurements are approximate and are for illustrative purposes only. While we cannot doubt the floor plans accuracy, we make no guarantee, warranty or representation as to the accuracy and completeness of the floor plan.