



## 12 Melaleuca Close Castle Hill NSW

5  2  3 

Occupying a high-side position within a quiet and leafy cul-de-sac, this charming single level home offers an abundance of sun-soaked living space perfect for families. Vaulted ceilings in the living and dining areas amplify the sense of space, perfect for both relaxation and hosting guests, while a rear rumpus room offers versatility as a home office or a teenage retreat. Sleek cabinetry and modern inclusions frame the refreshed kitchen which features a butler's pantry to conceal mess, plenty of cupboard space and modern stainless-steel cooking appliances. Outside offers a private haven for entertaining on the open patio space while enjoying views of the established gardens.

Formal accommodation is comprised of five well-sized bedrooms with built-in wardrobes. The master suite indulges in the luxury of a stylish ensuite adorned with

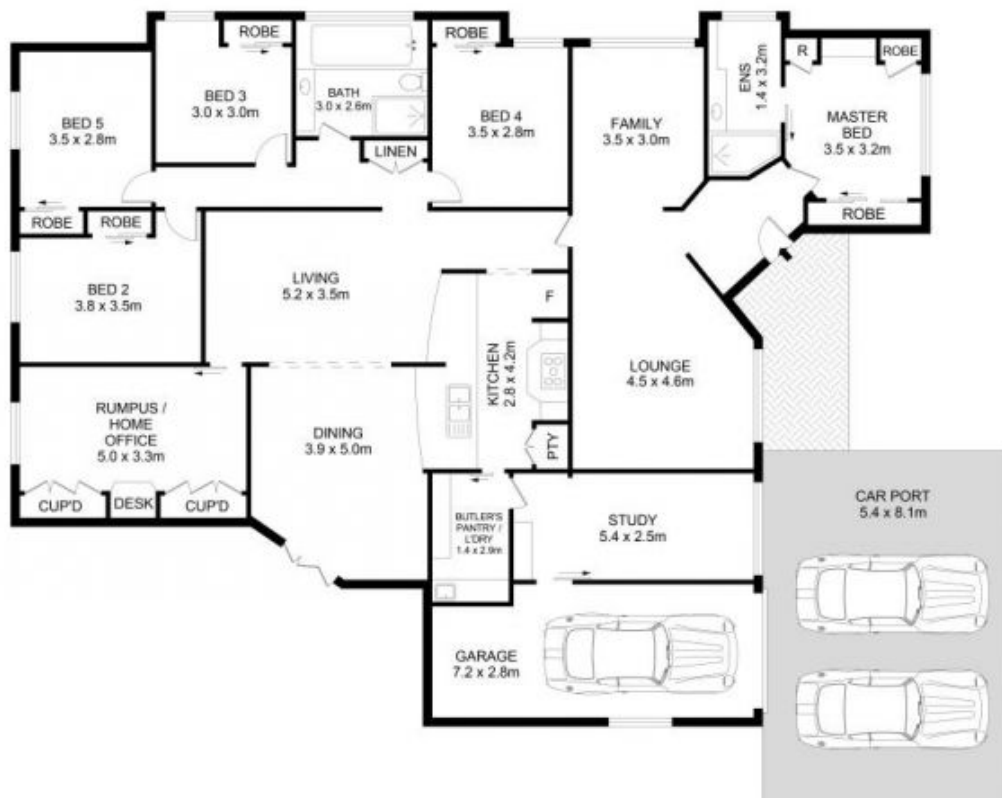
**Price** : \$ 2,400,000  
**Land Size** : 947 sqm  
**View** : <https://www.guardianrealty.com.au/sale/nsw/hills/castle-hill/residential/house/7966626>



**Ben Jobberns**  
0402 444 171



**Harrison Mahaffie**  
0447 551 737



#### Disclaimer

Floor Plan measurements are approximate and are for illustrative purposes only. While we cannot doubt the floor plans accuracy, we make no guarantee, warranty or representation as to the accuracy and completeness of the floor plan.