



## 33 Armidale Crescent Castle Hill NSW

4  2  2 

Discover unparalleled luxury in this impeccably designed Eden Brae split-level home, nestled within the tranquil confines of Oakhill Estate. With its unassuming yet sophisticated charm, prepare to be enchanted by its lofty 3.7-meter ceilings, captivating Blackbutt timber flooring, and expansive open-plan layout. Ideally positioned within the highly sought-after Cherrybrook Technology High School catchment area and just moments away from city express buses, Oakhill Drive Public School, Oakhill Catholic College, and local conveniences, this residence seamlessly blends convenience with elegance.

Featuring a master bedroom of unparalleled opulence, boasting a generously proportioned walk-in robe and a lavish ensuite, alongside three additional bedrooms adorned with double-height ceilings and built-in robes, this home is tailored for exquisite family living. Embrace the

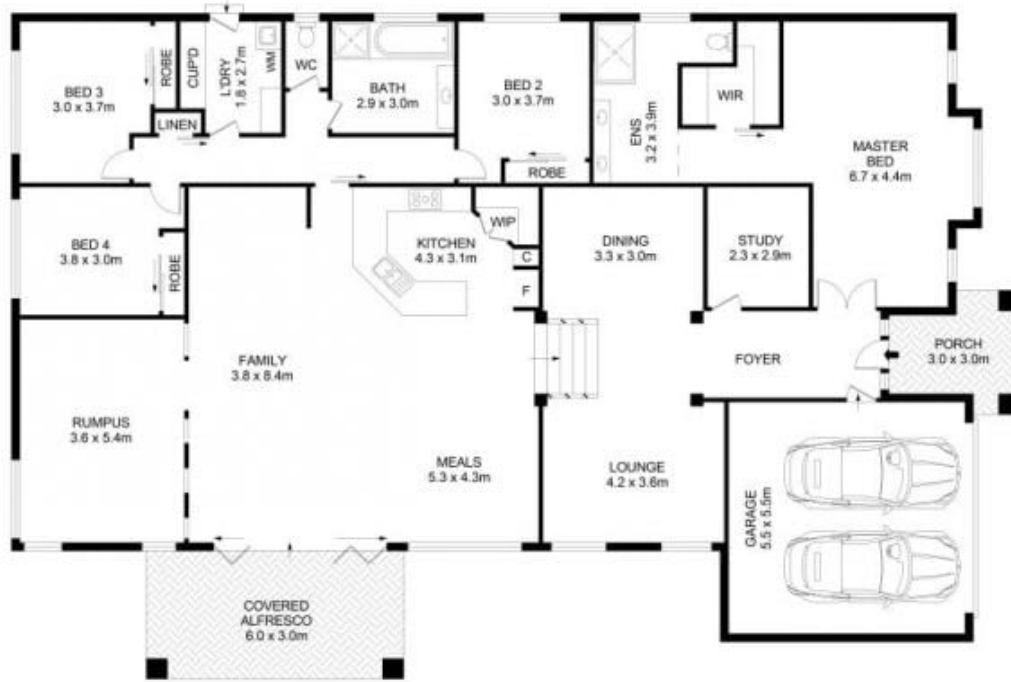
**Price** : Auction bidding guide \$2,550,000  
**Land Size** : 650 sqm  
**View** : <https://www.guardianrealty.com.au/sale/nsw/hills/castle-hill/residential/house/7963058>



**Harrison Mahaffie**  
0447 551 737



**Ben Jobberns**  
0402 444 171



### 33 Armidale Crescent, Castle Hill



guardian

**Disclaimer**

Floor Plan measurements are approximate and are for illustrative purposes only. While we cannot doubt the floor plans accuracy, we make no guarantee, warranty or representation as to the accuracy and completeness of the floor plan