



28/81-87 Cecil Avenue Castle Hill NSW

2  1  1 

Situated on the top floor of the prestigious 'Northwood Crest', this expansive apartment presents an effortless, low-maintenance lifestyle in a prime location. Embracing an open floorplan, the residence seamlessly connects to a balcony offering picturesque views of the surrounding district, bathing the interior in natural light. Granite benchtops frame the gourmet kitchen which is complete with modern cooking appliances, ample bench space and plenty of storage.

The master bedroom features a walk-in wardrobe and direct access to the spacious bathroom which includes a bathtub, while the second bedroom enjoys balcony access. This ultra-convenient address has major amenities at its doorstep, with Castle Towers, Castle Hill metro station, local and City buses, and a number of schools all just moments away.

**Price** : Contact Agent

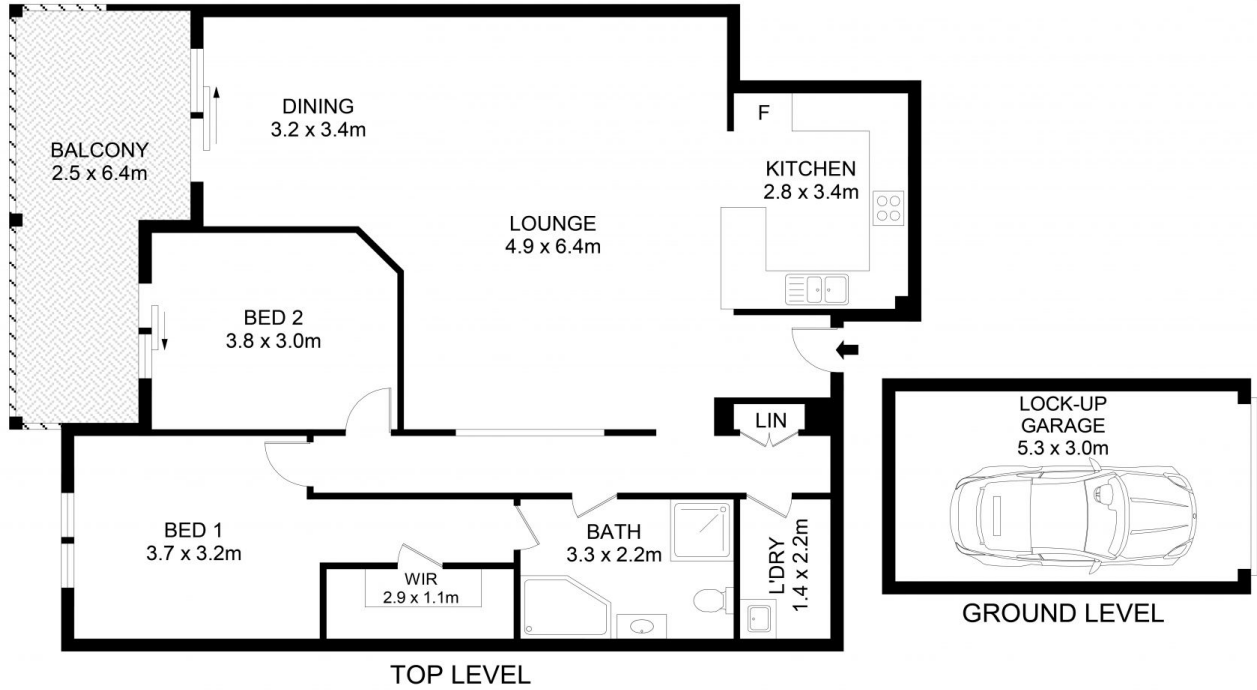
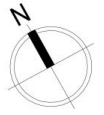
**View** : <https://www.guardianrealty.com.au/sale/nsw/hills/castle-hill/residential/unit/7957347>



**Grant McEnally**  
0414 968 460



**Benjamin See**  
0410 264 809



28/81 Cecil Avenue, Castle Hill

Disclaimer  
Floor Plan measurements are approximate and are for illustrative purposes only. While we cannot doubt the floor plans accuracy, we make no guarantee, warranty or representation as to the accuracy and completeness of the floor plan

