



## 8 Cattai Creek Drive Kellyville NSW

4  2  2 

Offered to the market for the first time, this expansive residence is an ideal choice for growing families in search of the ultimate Hills lifestyle. Positioned on a beautifully landscaped parcel of land in a highly sought-after locale, the spacious floorplan offers endless possibilities for crafting a dreamy retreat with seamless indoor-outdoor integration. Formal living and dining rooms to the right of the entry allow space for hosting guests while a rear rumpus room could be utilised as a teenage retreat. Stone benchtops frame the timber kitchen which boasts plenty of cupboard space, modern cooking appliances and a built-in pantry. Glass sliders from the rear rumpus room open to a covered alfresco which overlooks the child-friendly backyard, featuring manicured lawns and beautiful gardens.

**Land Size** : 645 sqm  
**View** : <https://www.guardianrealty.com.au/sale/nsw/hills/kellyville/residential/house/7949915>

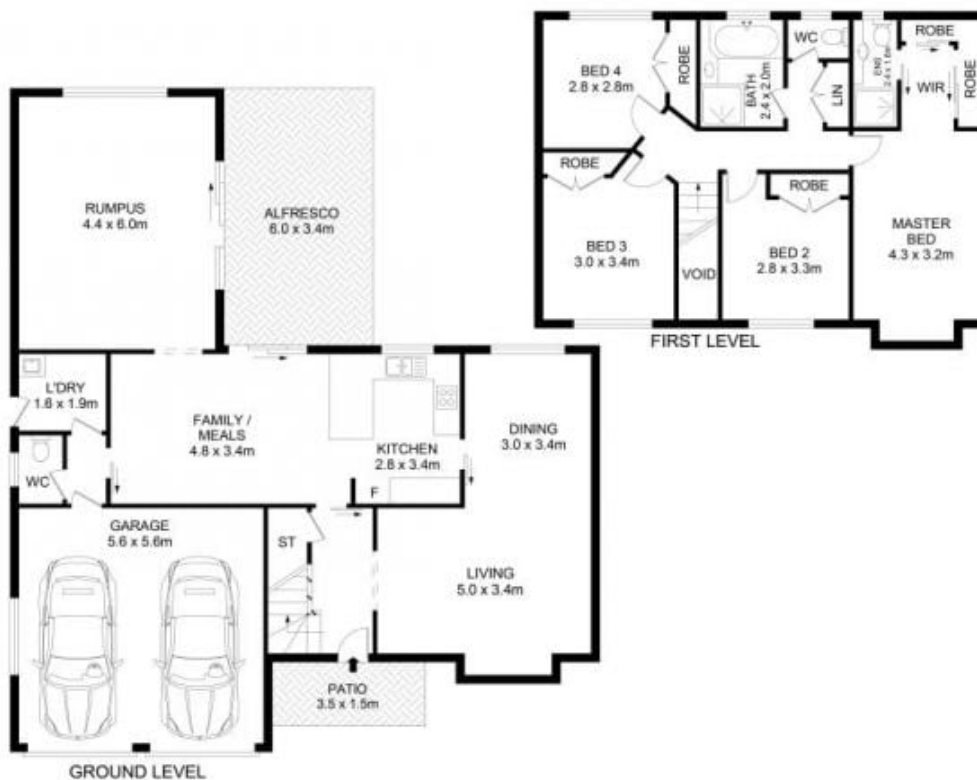


**Mannie Vassallo**  
0415 843 110



**Stephen Giacomelli**  
0413 360 777

The upper level boasts four generously-sized bedrooms



## 8 Cattai Creek Drive, Kellyville



guardian

### Disclaimer

Floor Plan measurements are approximate and are for illustrative purposes only. While we cannot doubt the floor plans accuracy, we make no guarantee, warranty or representation as to the accuracy and completeness of the floor plan.