



10 Lisa Crescent Castle Hill NSW

6  4  3 

Occupying a prized address in the heart of Castle Hill, this 18 month old designer residence epitomises a harmonious blend of space and style. From its impressive grand exteriors to its palatial living areas, the ground floor seamlessly integrates with expansive windows and double glass sliders, inviting effortless indoor-outdoor entertaining. Whether unwinding with guests in the oversized living and dining zone or indulging in movie nights in the dedicated theatre room, this home offers unparalleled comfort and luxury. Stone benchtops and modern cabinetry frame the gourmet kitchen which includes a butler's pantry to conceal mess, an island bench setting, modern cooking appliances and plenty of cupboard space. Complete with an outdoor kitchen and barbecue area, the elevated alfresco is positioned overlooking the pool and manicured lawns.

An upper-level living zone connects five queen-sized

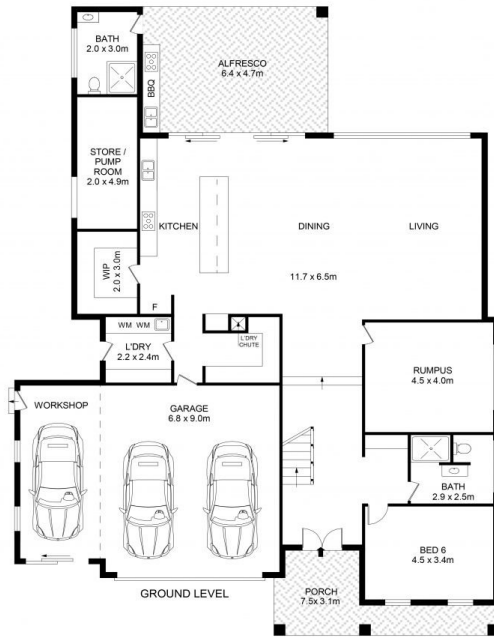
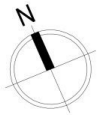
Price : For Sale - Contact Agent
Land Size : 988 sqm
View : <https://www.guardianrealty.com.au/sale/nsw/hills/castle-hill/residential/house/7938076>



Aaron Godfrey
0422 081 888



Bob (Kaiji) Guan
0490 100 091



10 Lisa Crescent, Castle Hill

Disclaimer

Floor Plan measurements are approximate and are for illustrative purposes only. While we cannot doubt the floor plans accuracy, we make no guarantee, warranty or representation as to the accuracy and completeness of the floor plan

