



9a Turner Avenue Ryde NSW

3  2  1 

Nestled in a prime location just moments away from local conveniences, this expansive torrens title duplex offers effortless living with a gorgeous bush backing. With a versatile two-level design, the ground floor presents a well-defined layout that seamlessly extends to the backyard. The kitchen is large and includes a built-in pantry, ample bench space and modern cooking appliances. A raised, covered decking area at the back provides a peaceful setting with views to tranquil bushland. The generous backyard is landscaped, featuring manicured lawns which offer plenty of space for kids to play.

Formal accommodation is comprised of three generously-sized bedrooms with built-in storage included in each. The master suite enjoys the privacy of an ensuite which even includes a bathtub, while the other two bedrooms are served by a neat main bathroom. Promising

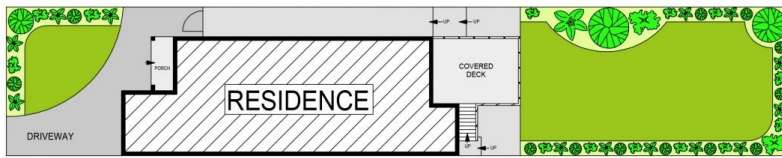
View : <https://www.guardianrealty.com.au/sale/nsw/north-horn-suburbs/ryde/residential/semi-detached/7929353>



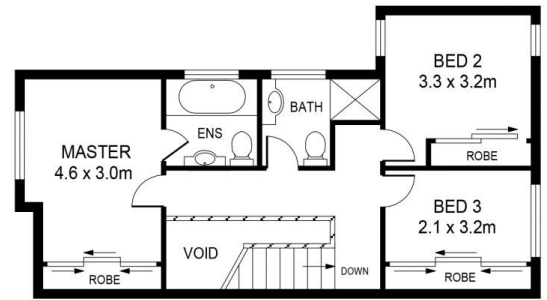
Simon Kowald
0407 433 660



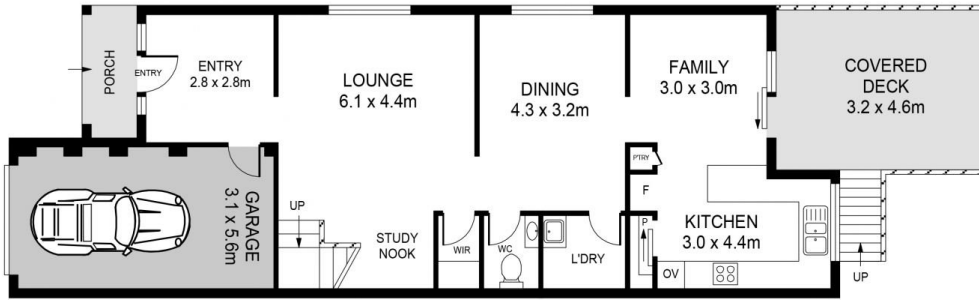
Luke Browning
0431 378 280



SITE PLAN



FIRST FLOOR



GROUND FLOOR



9A TURNER AVENUE, RYDE

DISCLAIMER:

PLANS SHOWN ARE FOR MARKETING PURPOSES ONLY. ALL DIMENSIONS ARE APPROXIMATE AND NOT TO SCALE. THEY ARE SUBJECT TO ERRORS AND INACCURACIES AND NO LIABILITY WILL BE ACCEPTED. INTERESTED PARTIES SHOULD MAKE THEIR OWN INQUIRIES.

