



# guardian



**12/1 Hume Avenue Castle Hill NSW**

2 2 2

Exuding an inner City feel of sophistication and charm, this New York terrace style apartment offers spacious living with a leafy outlook positioned in the popular 'Sorrento Gardens'. Large windows and glass sliders allow an abundance of natural light through the main living zone which has seamless flow through to the relaxed entertaining patio. Sleek Granite Stone benchtops frame the gourmet kitchen which includes modern stainless-steel gas cooking appliances, plenty of storage and ample food preparation space.

The upper level boasts two well-sized bedrooms with built-in wardrobes. An ensuite adds a touch of luxury to the master suite while the main bathroom includes floor-to-ceiling tiles and a bathtub. Promising ultimate convenience, the address is a short stroll from Castle Towers, Castle Hill metro station, CityBus interchange,

**Price** : \$ 890,000  
**Building Size** : 164 sqm  
**View** : <https://www.guardianrealty.com.au/sale/nsw/hills/castle-hill/residential/unit/7919071>



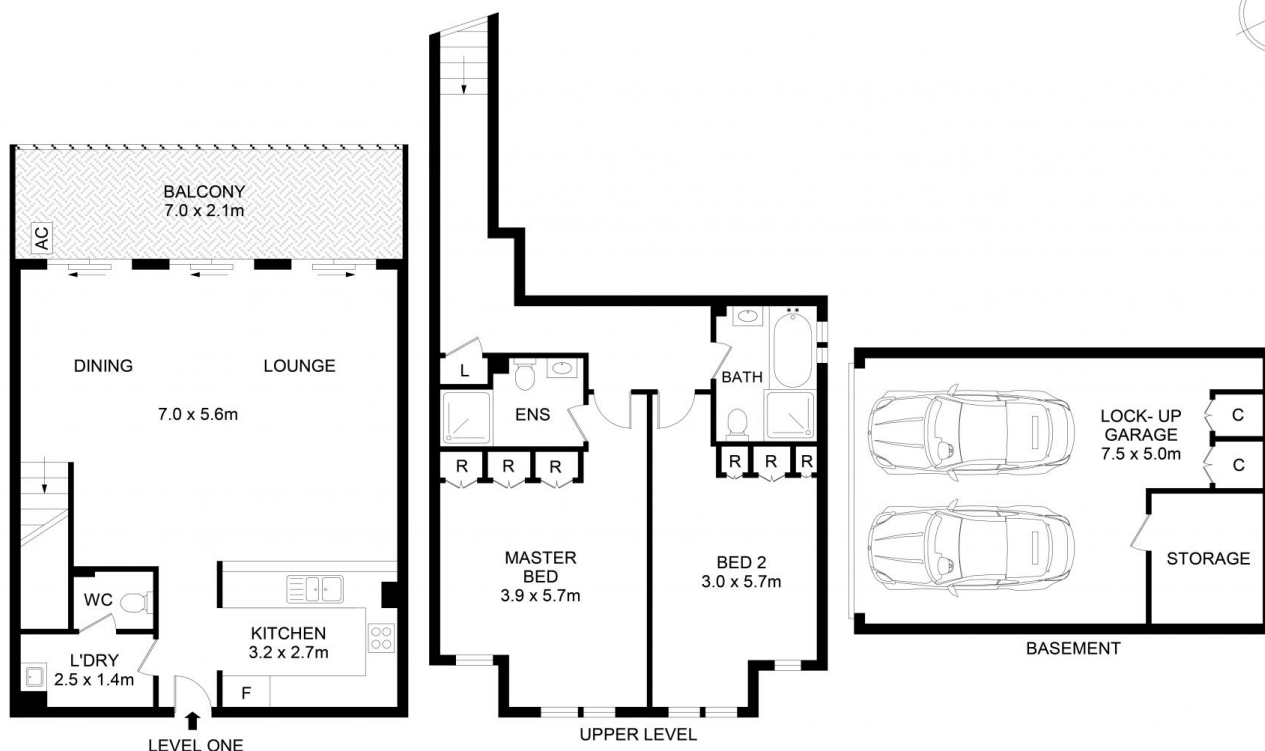
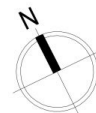
**Grant McEnally**  
0414 968 460



**Benjamin See**  
0410 264 809

<https://www.guardianrealty.com.au>

258 Old Northern Road Castle Hill NSW  
02 9659 5222



## 12/1-7 Hume Avenue, Castle Hill



Disclaimer  
Floor Plan measurements are approximate and are for illustrative purposes only. While we cannot doubt the floor plans accuracy, we make no guarantee, warranty or representation as to the accuracy and completeness of the floor plan