



6 Heatherbrae Place Castle Hill NSW

5  3  2 

Occupying a peaceful parcel within an established cul-de-sac setting, this commanding home is a sanctuary for family living. Spread over a thoughtful dual-level design, the lower-level floorplan features an abundance of living and entertaining space. Enjoying relaxing by the fireplace in the generous lounge room while the kids enjoy playing in the large rumpus room. An additional formal dining zone offers an additional space to enjoy a meal with friends. The kitchen features an abundance of bench space, plenty of cupboard space and modern cooking appliances. An entertainers' patio flowing from the rear rumpus room overlooks the grassy yard and manicured gardens, where there is space for play equipment and pets.

The upper level boasts five queen-sized bedrooms with each inclusive of generous storage. The master suite enjoys the luxury of a walk-in wardrobe and ensuite, while

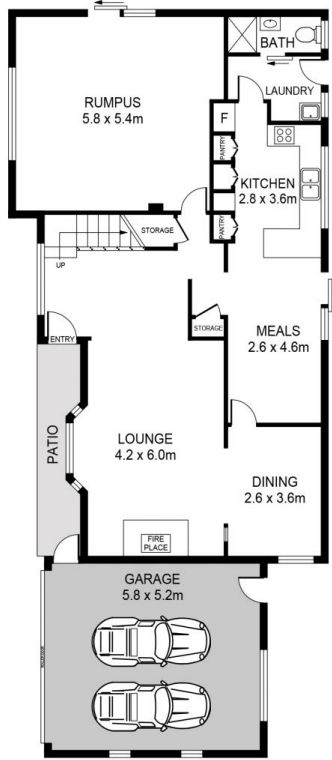
Price : \$ 2,570,000
Land Size : 1004 sqm
View : <https://www.guardianrealty.com.au/sale/nsw/hills/castle-hill/residential/house/7900748>



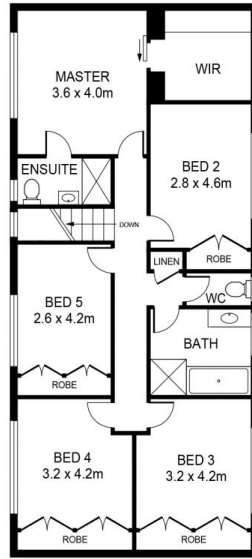
Simon Kowald
0407 433 660



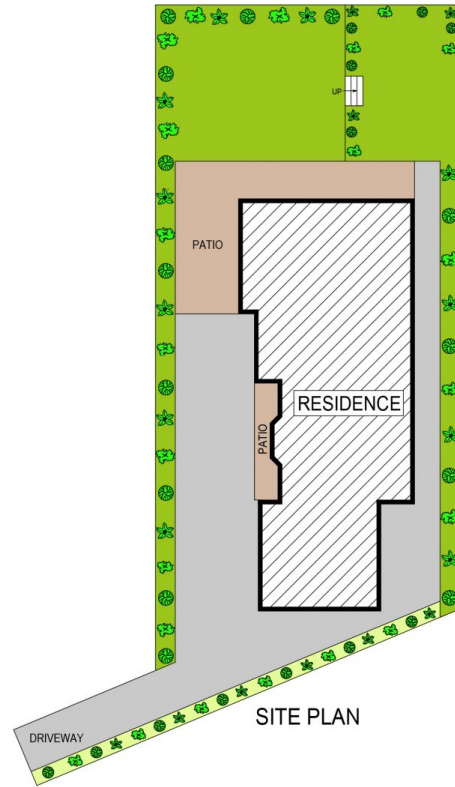
Luke Browning
0431 378 280



GROUND FLOOR



FIRST FLOOR



SITE PLAN

6 HEATHERBRAE PLACE, CASTLE HILL

DISCLAIMER:

PLANS SHOWN ARE FOR MARKETING PURPOSES ONLY. ALL DIMENSIONS ARE APPROXIMATE AND NOT TO SCALE. THEY ARE SUBJECT TO ERRORS AND INACCURACIES AND NO LIABILITY WILL BE ACCEPTED. INTERESTED PARTIES SHOULD MAKE THEIR OWN INQUIRIES.

