



**67 Rhinelander Road Box Hill NSW**

4  3  1 

Occupying an enviable address within walking distance of Carmel Village Shopping Centre, this brand-new residence promises a contemporary lifestyle. Spread over a dual level design where large windows allow an abundance of natural light through the home, the floorplan is flexible and bright. The modern, crisp kitchen features plenty of cupboard space, stainless-steel cooking appliances and a built-in pantry. Glass sliders from the informal meals zone open to a low maintenance backyard with manicured lawns.

The upper-level features three well-sized bedrooms with integrated storage included in each. The master enjoys the added privacy of an ensuite while a chic main bathroom inclusive of a bathtub serves the remaining accommodation. Catering to those seeking multi-generational family living, an additional lounge room downstairs offers potential as a fourth bedroom and is

**Price** : \$ 1,050,000

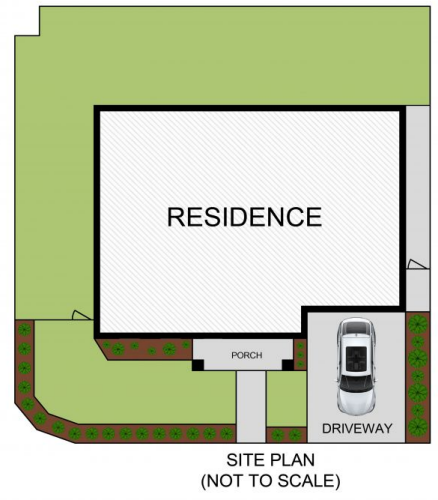
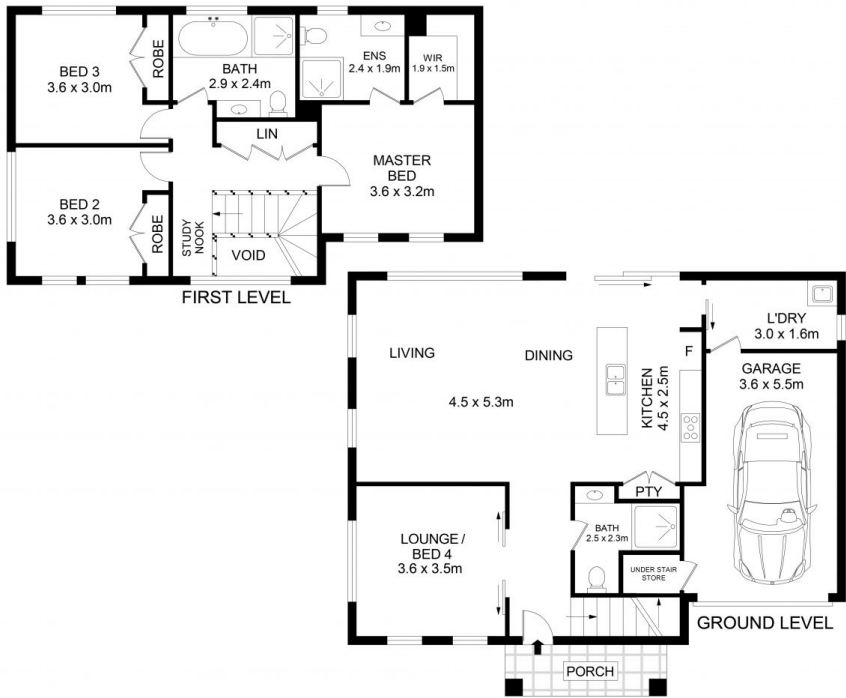
**View** : <https://www.guardianrealty.com.au/sale/nsw/western-sydney/box-hill/residential/house/7870979>



**Luke Bavaro**  
0488 093 292



**Nathan Gilmour**  
0488 025 900



## 67 Rhineland Road, Box Hill



**Disclaimer**  
Floor Plan measurements are approximate and are for illustrative purposes only. While we cannot doubt the floor plans accuracy, we make no guarantee, warranty or representation as to the accuracy and completeness of the floor plan

