



10 Brayden Way Kellyville NSW

4  2  2 

Tucked away in a whisper quiet cul-de-sac, this immaculate single level home is impressive right from its contemporary façade. Designed to maximise space and family-function, the floorplan features an open plan family zone as well as an additional media room. Caesarstone benchtops frame the gourmet kitchen which includes a large oven, walk-in pantry, wine storage, plenty of cupboard space and an induction cooktop. Glass sliders from the family zone allow for seamless transition to the outdoors, where a private alfresco leads to manicured lawns and a saltwater pool.

The master suite is set at the front of the home and enjoys the storage of a walk-in wardrobe and privacy of a well-appointed ensuite complete with a double vanity. Three queen-sized bedrooms are cleverly spaced around a generous main bathroom with separate toilet for ease in family living. This enviable address is a short stroll to

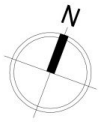
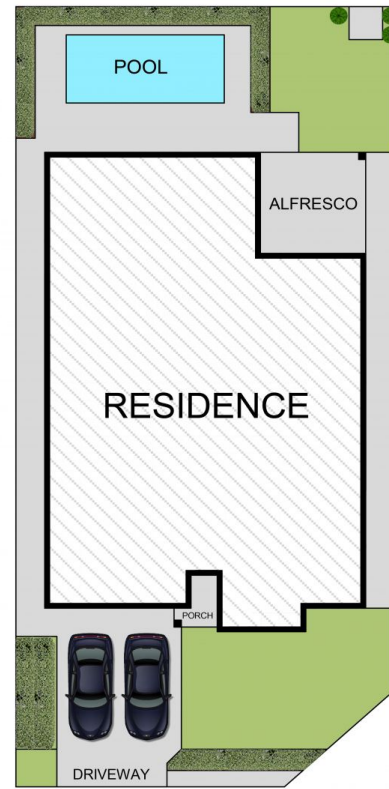
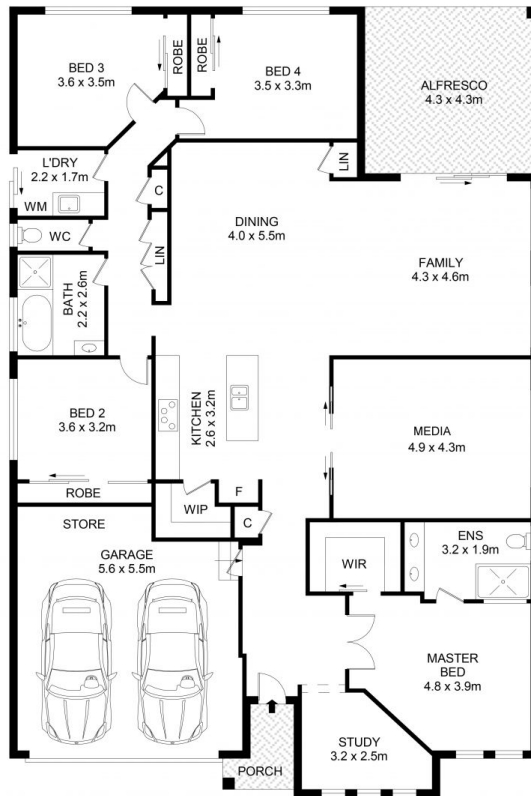
Land Size : 502.7 sqm
View : <https://www.guardianrealty.com.au/sale/nsw/hills/kellyville/residential/house/7870090>



Luke Bavaro
 0488 093 292



Nathan Gilmour
 0488 025 900



10 Brayden Way, Kellyville

Disclaimer

Floor Plan measurements are approximate and are for illustrative purposes only. While we cannot doubt the floor plans accuracy, we make no guarantee, warranty or representation as to the accuracy and completeness of the floor plan



SITE PLAN
(NOT TO SCALE)



guardian