



**24 Welara Street Box Hill NSW**

5  3  2 

Occupying an elevated position within the growing Box Hill precinct, this designer residence is immediately impressive right from its commanding street presence. Spread over two light-filled levels, the contemporary floorplan offers spacious living highlighted by luxurious inclusions and finishes. Enjoy family movie nights in the media room which is complete with coffered ceilings or relaxing in front of the feature fireplace in the main living zone. Gorgeous Caesarstone benchtops frame the gourmet kitchen which includes quality Bosch cooking appliances and a large butler's pantry to conceal mess.

An additional study area on the upper level connects the formal accommodation. Each of the bedrooms are generously-sized, with the master enjoying the luxury of a palatial ensuite complete with a free-standing tub. This family-friendly address is only 4 minutes from Carmel View

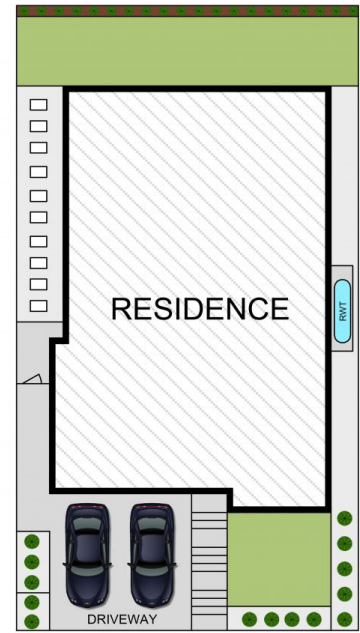
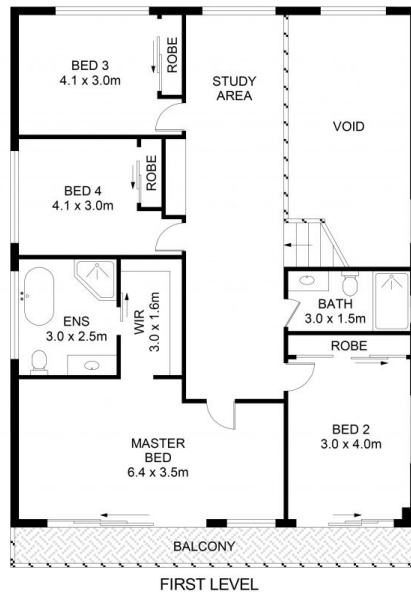
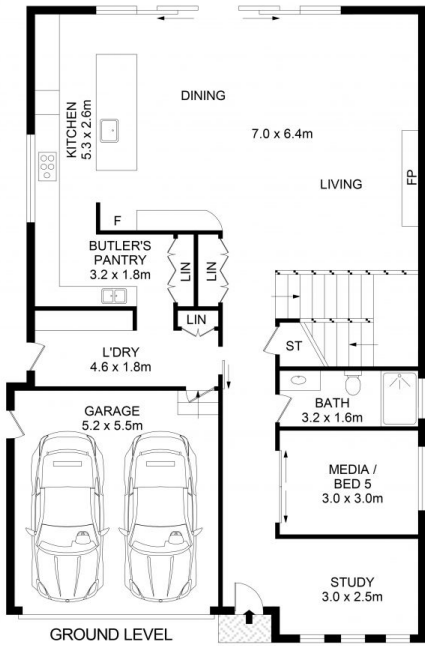
**View :** <https://www.guardianrealty.com.au/sale/nsw/western-sydney/box-hill/residential/house/7807147>



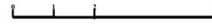
**Luke Bavaro**  
0488 093 292



**Nathan Gilmour**  
0488 025 900



## 24 Welara Street, Box Hill



guardian

### Disclaimer

Floor Plan measurements are approximate and are for illustrative purposes only. While we cannot doubt the floor plans accuracy, we make no guarantee, warranty or representation as to the accuracy and completeness of the floor plan