



38 Louise Avenue Baulkham Hills NSW

4  2  3 

Offered to the market for the first time in 38 years, this full brick residence is a delightful retreat for families. Set on an elevated parcel opposite Torry Burn Reserve, the floorplan boasts a formal lounge room on entry as well as a rear rumpus room with potential as a media room or teenage retreat. A large window allows an abundance of natural light through the kitchen which features a built-in pantry, ample bench space and plenty of storage. Flowing off the rear of the home, a covered pergola offers the perfect space to relax and unwind. The large backyard enjoys the shade from established trees, manicured lawns and easy-care gardens.

Each of the four bedrooms are generously sized and include built-in wardrobes. Set at the rear of the home to maximise peace and quiet, the master suite also enjoys access to an ensuite. The other three bedroom are spaced

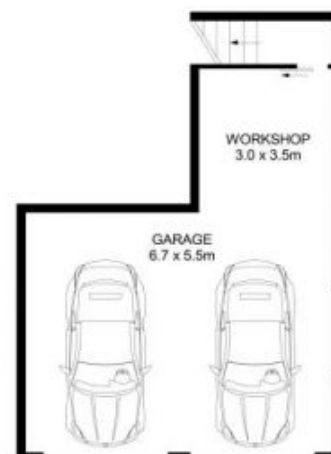
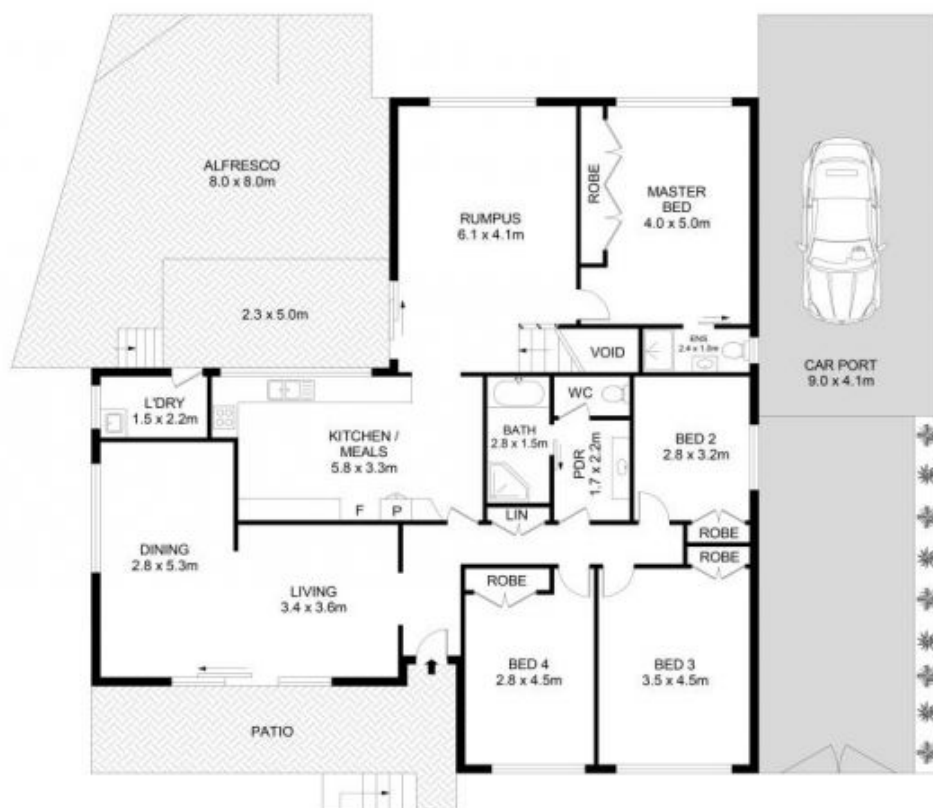
Price : \$ 2,000,000
Land Size : 929 sqm
View : <https://www.guardianrealty.com.au/sale/nsw/hills/baulkham-hills/residential/house/7791206>



Ben Jobberns
0402 444 171



Harrison Mahaffie
0447 551 737



38 Louise Avenue, Baulkham Hills



Disclaimer

Floor Plan measurements are approximate and are for illustrative purposes only. While we cannot doubt the floor plans accuracy, we make no guarantee, warranty or representation as to the accuracy and completeness of the floor plan