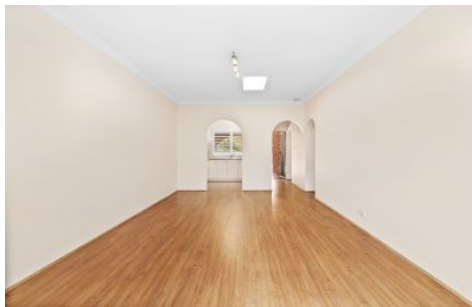




# guardian



**7/29-31 Hughes Avenue Castle Hill NSW**

**2** **1** **1**

Conveniently located within a short stroll of Hills Showground metro station and buses, this single level villa offers a low maintenance lifestyle and future development potential (STCA). Freshly painted interiors feature an open living space which is bathed in natural light. The neat kitchen boasts plenty of cupboard space, modern cooking appliances and ample bench space. Glass sliders from the versatile living zone open to a small pergola perfect for relaxing outdoors.

Both the master suite and second bedroom feature mirrored built-in wardrobes and ceiling fans. A modern bathroom with floor-to-ceiling tiles and a separate toilet is set between the two bedrooms. This address is an ideal choice for investors due to the R4 zoning, with development potential in view (STCA). Set right in the heart of Castle Hill, this address is only 2km from Castle Towers,

**Price** : Contact Agent  
**View** : <https://www.guardianrealty.com.au/sale/nsw/hills/castle-hill/residential/villa/7788332>



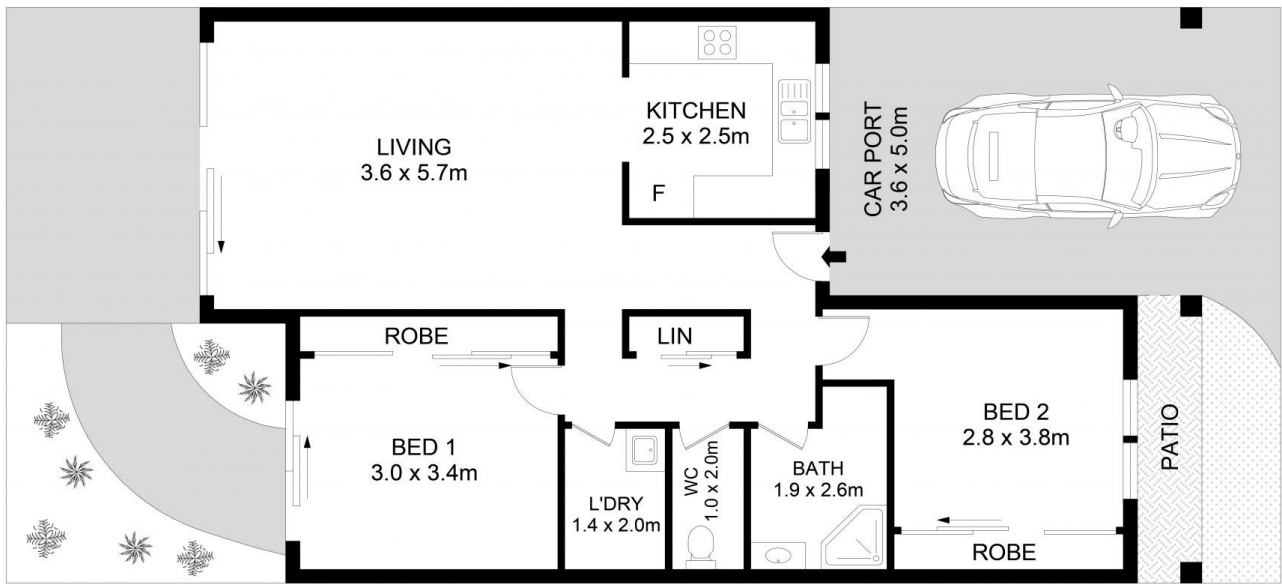
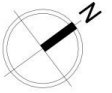
**Luke Bavaro**  
**0488 093 292**



**Nathan Gilmour**  
**0488 025 900**

<https://www.guardianrealty.com.au>

258 Old Northern Road Castle Hill NSW  
02 9659 5222



7/29 Hughes Avenue, Castle Hill



**Disclaimer**

Floor Plan measurements are approximate and are for illustrative purposes only. While we cannot doubt the floor plans accuracy, we make no guarantee, warranty or representation as to the accuracy and completeness of the floor plan