



## 20 Daintree Place Dural NSW

4  3  4 

Tucked away at the end of a leafy cul-de-sac, this sun-soaked residence offers plenty of space for growing families. Enjoy hosting guests in the formal living and dining zone to the right of the stunning entry as well as relaxed family time in the open dining room. Centrally-set between the living zones, the neat kitchen features a built-in pantry, sleek cabinetry and modern stainless-steel cooking appliances. Glass sliders open to an enormous covered alfresco perfect for parties and outdoor dining, with side access to the property offering potential for undercover boat or trailer storage. The elevated backyard is both child and pet-friendly, with plenty of space for play equipment.

The light-filled upper level boasts four large bedrooms with integrated storage included in each. Both the ensuite and main bathroom have been renovated and feature floor-to-ceiling tiles and quality fixtures such as a gorgeous

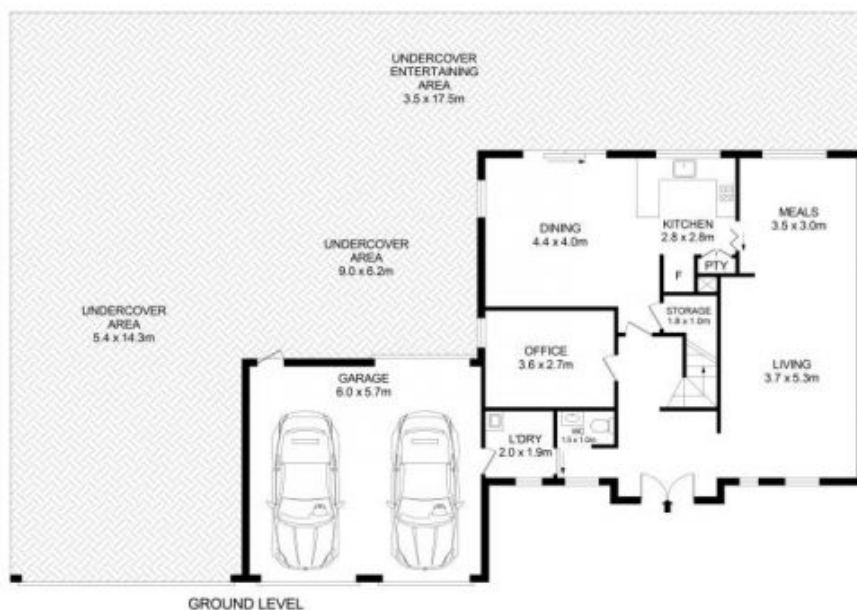
**Price** : \$ 1,920,000  
**Building Size** : 200 sqm  
**Land Size** : 848 sqm  
**View** : <https://www.guardianrealty.com.au/sale/nsw/hills/dural/residential/house/7786656>



**Joel Green**  
0408 293 262



**Ben Chetcuti**  
0475 909 787



## 20 Daintree Place, Dural



### Disclaimer

Floor Plan measurements are approximate and are for illustrative purposes only. While we cannot doubt the floor plans accuracy, we make no guarantee, warranty or representation as to the accuracy and completeness of the floor plan.