



16 Fulton Place North Kellyville NSW

4  2  2 

This five-acre parcel is an incredibly rare find within the rapidly evolving North Kellyville precinct. Choose to renovate the existing home into an acreage sanctuary, or hold on to the parcel with subdivision potential in mind (STCA). The current home is positioned to enjoy a near North-to-rear aspect and offers multi-zoned living. Accommodation is comprised of four bedrooms with integrated storage included in each. The master enjoys an ensuite while a generous main bathroom serves the home.

The backyard is a private oasis which could be transformed into a haven for entertaining with the addition of tennis court, pool or both. The address promises a lifestyle of ultimate convenience with North Kellyville Square, buses, childcare and local schools all within walking distance. Rouse Hill Town Centre and Rouse Hill metro station are an easy 8 minute drive, while Castle Towers is less than 15

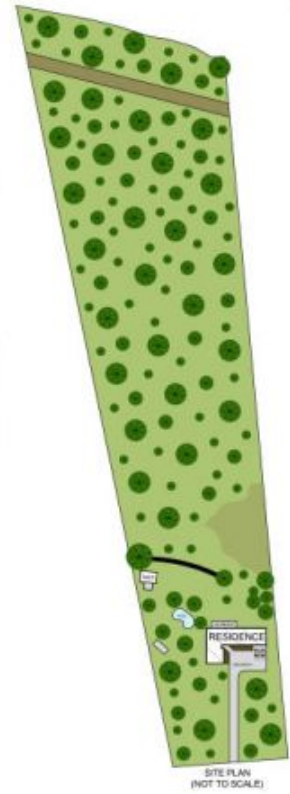
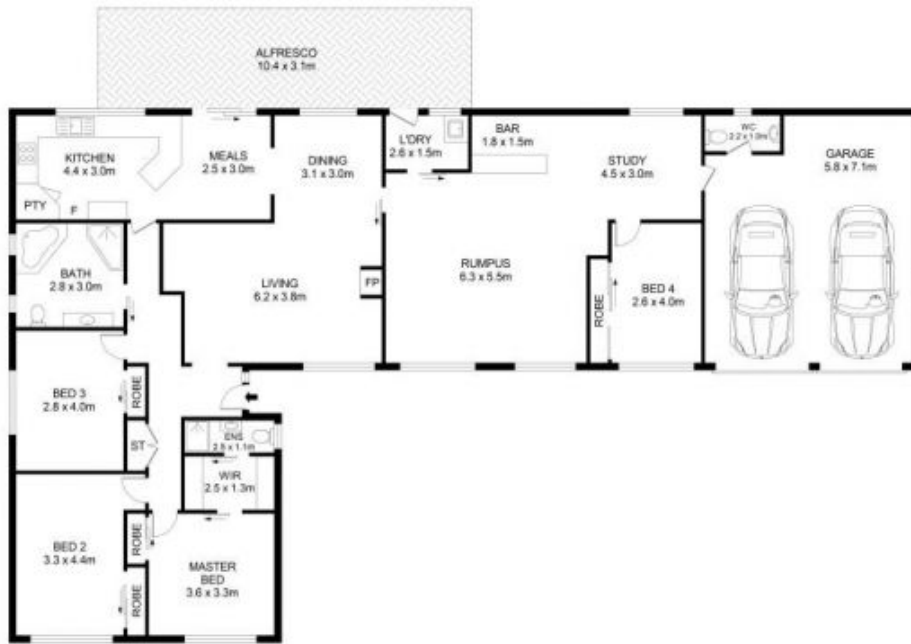
Price : \$3,995,000 - \$4,195,000
Land Size : 5 Acres
View : <https://www.guardianrealty.com.au/sale/nsw/hills/north-kellyville/residential/acreagesemi-rural/7698399>



Gavin Weekley
0407 024 600



Josh McAdam
0425 886 484



SITE PLAN
(NOT TO SCALE)

16 Fulton Place, North Kellyville

Disclaimer
Floor Plan measurements are approximate and are for illustrative purposes only. While we cannot doubt the floor plans accuracy, we make no guarantee, warranty or representation as to the accuracy and completeness of the floor plan

