



### 34 Skye Court Kellyville NSW

5  3  2 

Offering the perfect combination of space and convenience, this dual level residence is an ideal choice for growing families. The ground floor boasts open plan living and formal entertaining rooms, both of which are filled with an abundance of natural light. Stone benchtops and crisp cabinetry frame the gourmet kitchen which includes a gas cooktop, built-in pantry, and island bench setting. Glass sliders open from the informal meals zone to a private alfresco which looks to the established gardens and manicured lawns.

Upstairs features four well-sized bedrooms with integrated storage and ceiling fans. The master suite enjoys the privacy of an ensuite and a generous walk-in wardrobe while a main bathroom with a separate toilet serves the other three bedrooms. This peaceful address is an easy stroll to buses, William Clarke College, and Bernie Mullane

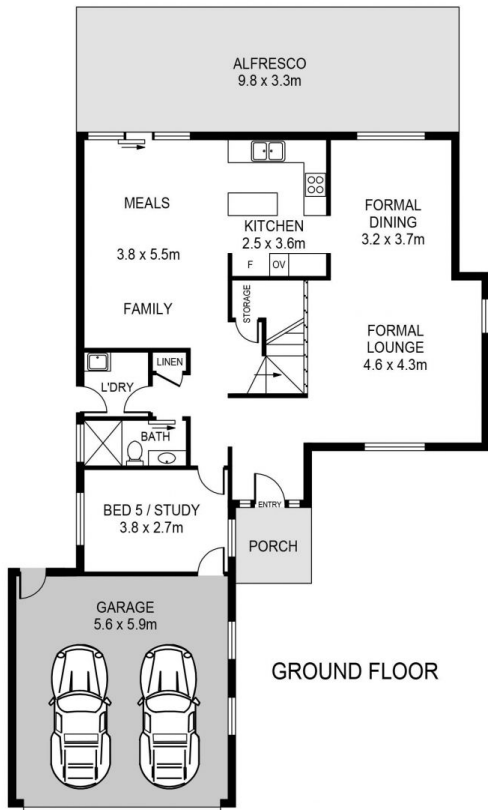
**View :** <https://www.guardianrealty.com.au/lease/nsw/hills/kellyville/residential/house/7588705>



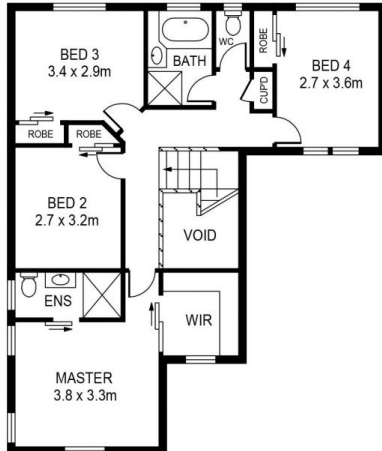
**Daniel Hall**  
0448 580 039



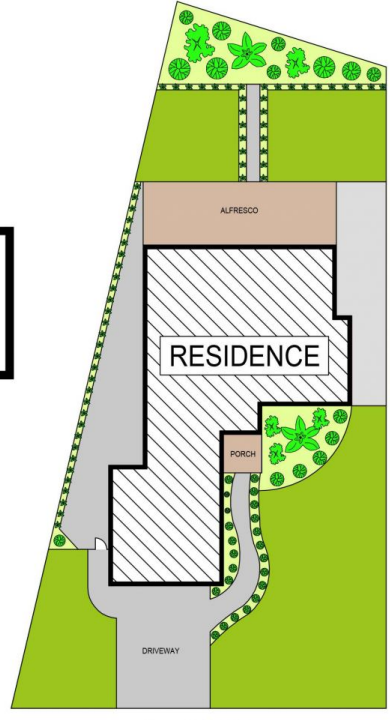
**Caleb McAdam**  
0425 886 486



GROUND FLOOR



FIRST FLOOR



SITE PLAN



34 SKYE COURT, KELLYVILLE

DISCLAIMER:  
 PLANS SHOWN ARE FOR MARKETING PURPOSES ONLY. ALL DIMENSIONS ARE APPROXIMATE AND NOT TO SCALE. THEY ARE SUBJECT TO ERRORS AND INACCURACIES AND NO LIABILITY WILL BE ACCEPTED. INTERESTED PARTIES SHOULD MAKE THEIR OWN INQUIRIES.

