



**49 Ravensbourne Circuit Dural NSW**

4  2  2 

Enjoying position within the popular Elouera Estate pocket, this immaculate and refreshed Australand home ticks the boxes for growing families. Spread over two light-filled levels, the home offers multiple living zones including a formal lounge and dining space and upstairs rumpus room. A modern colour palate frames the neat kitchen which is centrally-set between the living zones and includes an electric cooktop and plenty of storage. Glass sliders open from the rear meals zone to a relaxed pergola perfect for entertaining, which overlooks the gorgeous gardens and flat backyard.

An upper level rumpus space connects four large bedrooms, with each inclusive of integrated storage. A bright ensuite adds privacy to the master suite while a generous bathroom with a separate toilet simplifies living for busy families. This family haven is only 5 minutes from

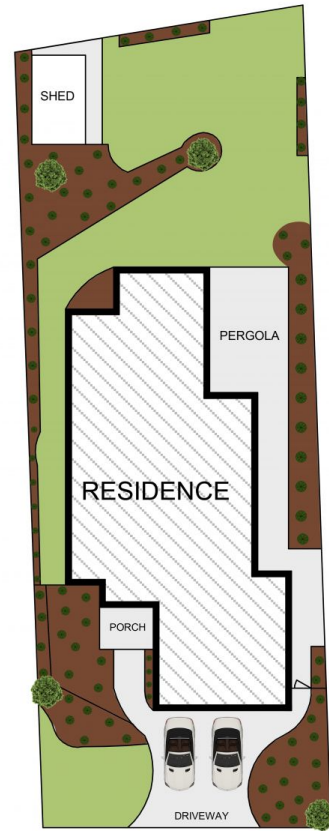
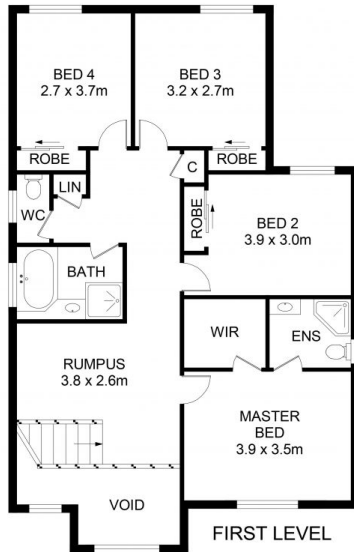
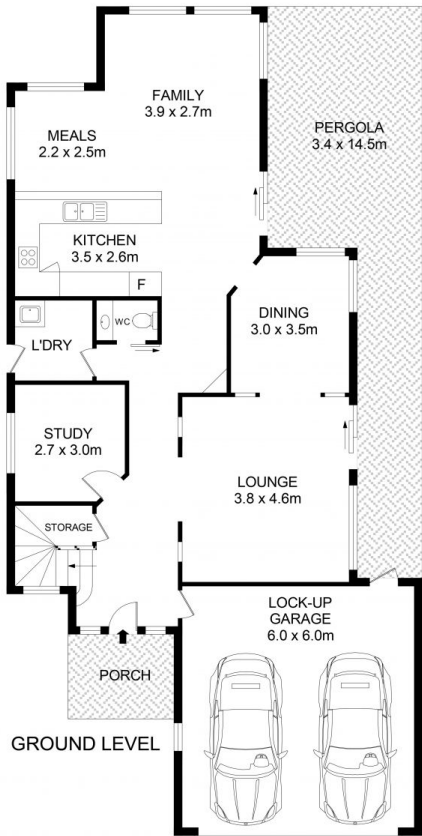
**Price** : \$ 1,760,000  
**Land Size** : 500 sqm  
**View** : <https://www.guardianrealty.com.au/sale/nsw/hills/dural/residential/house/7559126>



**Joel Green**  
0408 293 262



**Preston Stewart**  
0468 848 105



SITE PLAN  
(NOT TO SCALE)

## 49 Ravensbourne Circuit, Dural

**Disclaimer**  
 Floor Plan measurements are approximate and are for illustrative purposes only. While we cannot doubt the floor plans accuracy, we make no guarantee, warranty or representation as to the accuracy and completeness of the floor plan



**guardian**  
 realty