



G09/9B Terry Road Rouse Hill NSW

2  2  1 

Enjoying a ground floor position, this spacious apartment offers an easy-care lifestyle within walking distance to school, shops & Rouse Hill Metro Station. Large windows allow an abundance of natural light through the open plan living & dining zone, and Stone benchtops frame the kitchen which includes a built-in pantry, stainless-steel gas cooking appliances and plenty of storage. Glass sliders from the living zone open to a covered courtyard leading to a neat, private rear yard, ideal for children or pets.

Two generously sized bedrooms with built-in wardrobes also look onto the backyard, while the master bedroom enjoys the luxury of a modern ensuite. A chic main bathroom with floor-to-ceiling tiles and a bathtub serves the remainder of the apartment. This ultra-convenient address is only five minutes from Rouse Hill Town Centre and fifteen minutes to Norwest Business Park.

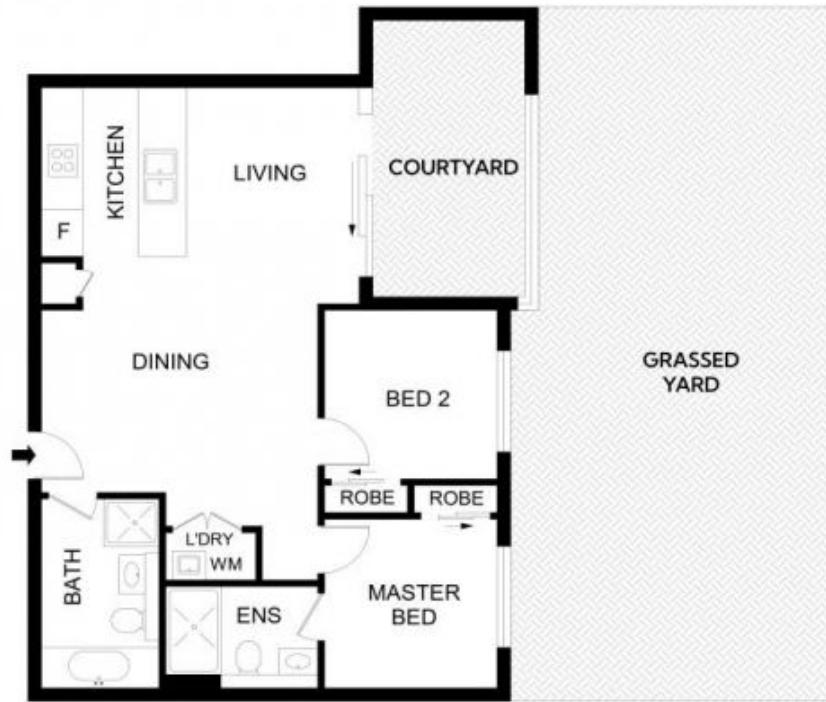
View : <https://www.guardianrealty.com.au/sale/nsw/hills/rouse-hill/residential/unit/7436621>



Daniel Toms
0448 013 566



Stephen Giacomelli
0413 360 777



G09/9B Terry Road, Rouse Hill



Disclaimer
 Floor Plan measurements are approximate and are for illustrative purposes only. While we cannot doubt the floor plans accuracy, we make no guarantee, warranty or representation as to the accuracy and completeness of the floor plan

