



15 Guinevere Court Castle Hill NSW

4  2  2 

Enviably located in a peaceful and leafy cul-de-sac in Knightsbridge, this neat single level home is ready for a new family. Spread over a flexible and sun-soaked floorplan, the layout offers multiple living zones including a formal lounge room and separate formal dining zone on entry. An informal meals zone is positioned next to the kitchen, which includes a built-in pantry, plenty of storage and an electric cooktop. Glass sliders from the family zone open to a light-filled, enclosed alfresco; which looks to the landscaped gardens and manicured lawns.

Formal accommodation is made up of four well-sized bedrooms, with integrated storage to three. An ensuite adds privacy to the master suite while a generous three-way bathroom serves the remainder of the home. This ultra-convenient address is within walking distance to Samuel Gilbert Public School, buses and the recently

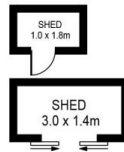
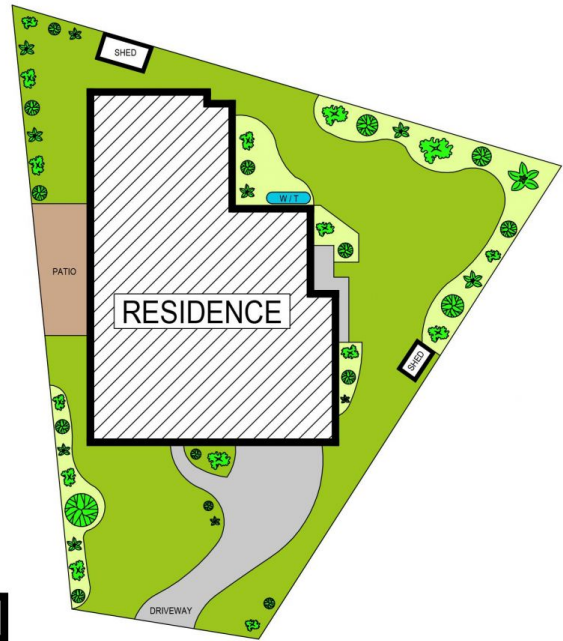
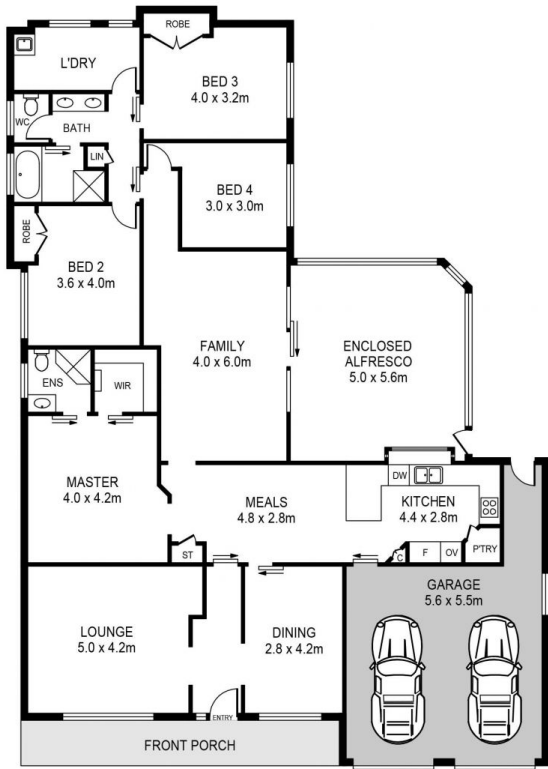
Price : \$ 1,760,000
Land Size : 789 sqm
View : <https://www.guardianrealty.com.au/sale/nsw/hills/castle-hill/residential/house/7157605>



Grant McEnally
0414 968 460



Katia Serra
0474 899 383



SITE PLAN



15 GUINEVIERE COURT, CASTLE HILL

DISCLAIMER:
 PLANS SHOWN ARE FOR MARKETING PURPOSES ONLY. ALL DIMENSIONS ARE APPROXIMATE AND NOT TO SCALE. THEY ARE SUBJECT TO ERRORS AND INACCURACIES AND NO LIABILITY WILL BE ACCEPTED. INTERESTED PARTIES SHOULD MAKE THEIR OWN INQUIRIES.

guardian
 realty