



guardian



36 Shoplands Road Annangrove NSW

5 3 2

Boasting views to the Blue Mountains and two sweeping street frontages, this lush acreage parcel is both scenic and tranquil. Set back from the road is an expansive, dual level residence full of character and natural light, with opportunity for transformation into a contemporary retreat. The ground floor offers multiple living zones including a large rumpus room and a formal lounge and dining zone. Centrally set between living zones, the kitchen offers plenty of storage and enviable acreage views. Glass sliders open from the family zone to the rear of the property which extends plenty of entertaining opportunity. Palm trees surround the pool and spa area while an entertainer's patio is positioned to enjoy the serenity.

The upper level of the home features five large bedrooms with built-in wardrobes to four. An ensuite adds a touch of luxury to the master suite while a generous main bathroom

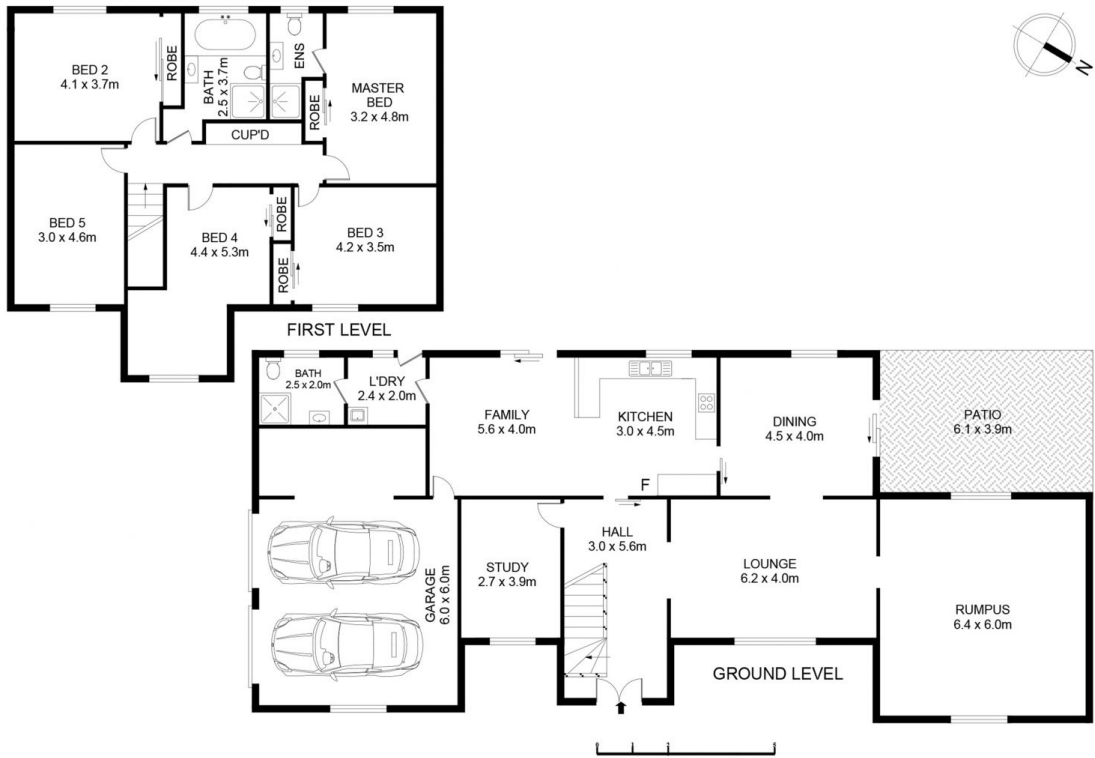
Land Size : 5 Acres
View : <https://www.guardianrealty.com.au/sale/nsw/hills/annangrove/residential/house/7144186>



Ben Jobberns
0402 444 171



Harrison Mahaffie
0447 551 737



36 Shoplands Road, Annangrove

Disclaimer

Floorplan measurements are approx. and for illustrative purposes only.

While we cannot doubt the floorplans accuracy, we make no guarantee, warranty or representation as to the accuracy and completeness of the floorplan.

