



3 Nevis Place Castle Hill NSW

5  3  3 

Proudly poised on a professionally landscaped and elevated parcel, this master built Billyard Home is an executive residence not to be missed. Located within the highly-sought after Balintore Estate, a very prestigious location in Castle Hill. Spread over three versatile levels with in-law accommodation potential, this home exudes grandeur right from its enviable street presence. Living spaces include a formal lounge and dining zone to the right of the entrance as well as an enormous rumpus room complete with the relaxed ambience of a fireplace to the left. An open plan family and meals zone surrounds the gourmet kitchen which includes a hot and cold billi unit, built-in pantry, chic cabinetry, 40mm granite benchtops, Miele dishwasher and a Siemens induction cooktop. The front garden features quality sandstone and established plants, while the backyard offers a private entertaining area and child-friendly grassed area.

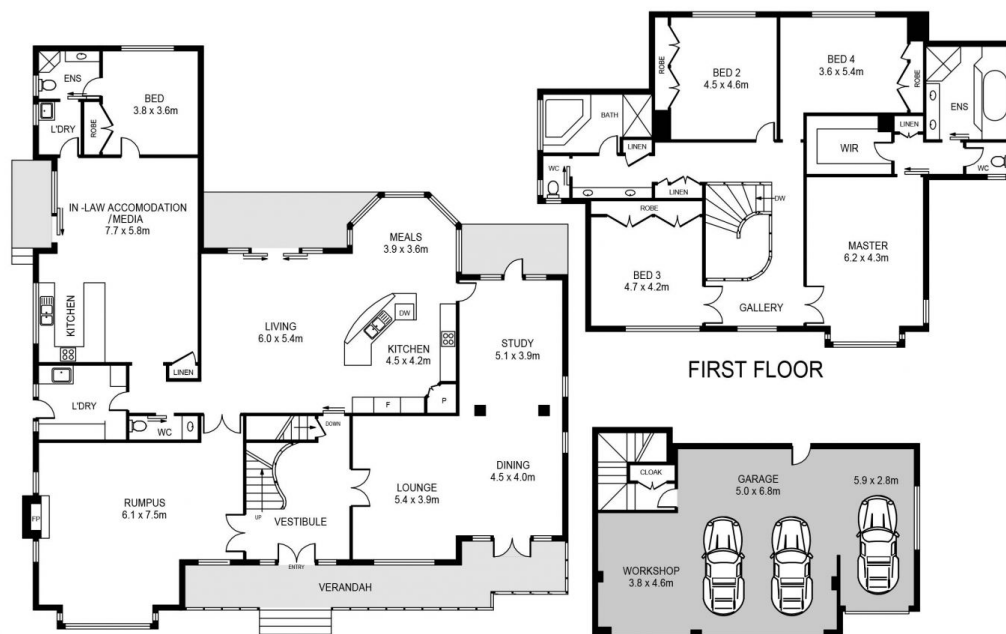
Land Size : 913 sqm
View : <https://www.guardianrealty.com.au/sale/nsw/hills/castle-hill/residential/house/7079988>



Grant McEnally
0414 968 460



Aaron Godfrey
0422 081 888



3 NEVIS PLACE, CASTLE HILL

DISCLAIMER:

PLANS SHOWN ARE FOR MARKETING PURPOSES ONLY. ALL DIMENSIONS ARE APPROXIMATE AND NOT TO SCALE. THEY ARE SUBJECT TO ERRORS AND INACCURACIES AND NO LIABILITY WILL BE ACCEPTED. INTERESTED PARTIES SHOULD MAKE THEIR OWN INQUIRIES.



guardian
realty