



guardian



11 Balintore Drive Castle Hill NSW

3 2 2

Set on an easy-care parcel within the prestigious Balintore Drive pocket of Castle Hill, this well-maintained duplex offers the perfect mix of convenience and low maintenance living. Spread over a thoughtful single level design, the home boasts light-filled living space positioned around a courtyard perfect for entertaining. The neat kitchen boasts a electric cooktop, built-in pantry and plenty of bench space while an adjoining meals zone makes dinner time easy.

Three well-sized bedrooms with integrated storage are set in their own wing for peace and quiet. An ensuite serves the master suite while a generous main bathroom serves the remaining bedrooms. This neat duplex is a walk to buses, Heritage Park and Knightsbridge Shopping Centre. It's also an easy drive to both Castle Towers and metro station, and is surrounded by elite schools such as Oakhill College.

Price : \$ 1,280,000
Land Size : 373 sqm
View : <https://www.guardianrealty.com.au/sale/nsw/hills/castle-hill/residential/semi-detached/7020057>



Aaron Godfrey
0422 081 888



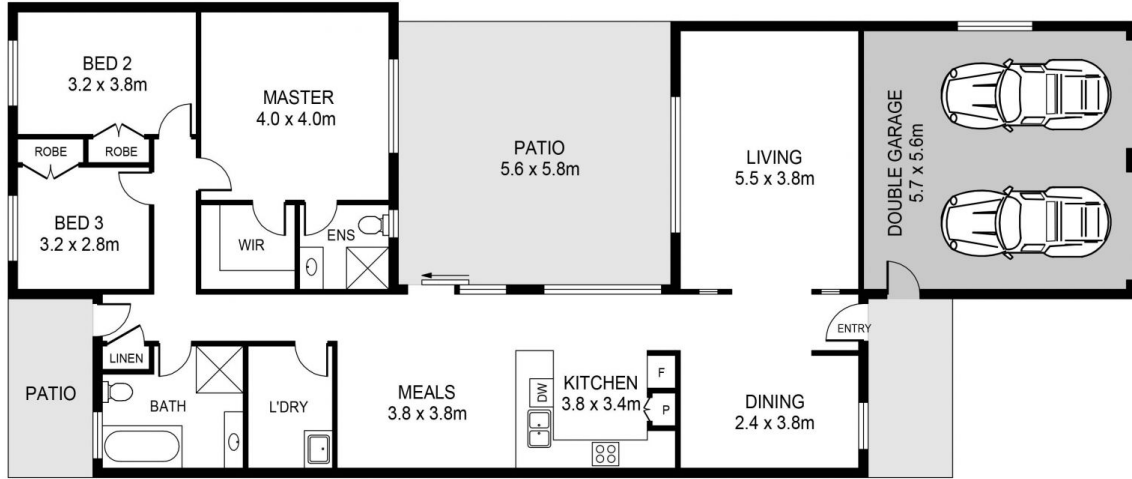
Sam Schwarz
0423 731 015

<https://www.guardianrealty.com.au>

258 Old Northern Road Castle Hill NSW
02 9659 5222



SITE PLAN



11 BALINTORE DRIVE, CASTLE HILL

DISCLAIMER:
 PLANS SHOWN ARE FOR MARKETING PURPOSES ONLY. ALL DIMENSIONS ARE APPROXIMATE AND NOT TO SCALE. THEY ARE SUBJECT TO ERRORS AND INACCURACIES AND NO LIABILITY WILL BE ACCEPTED. INTERESTED PARTIES SHOULD MAKE THEIR OWN INQUIRIES.

guardian
 realty