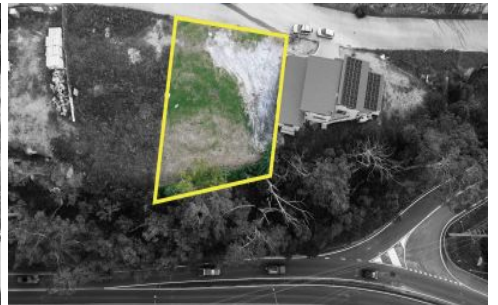
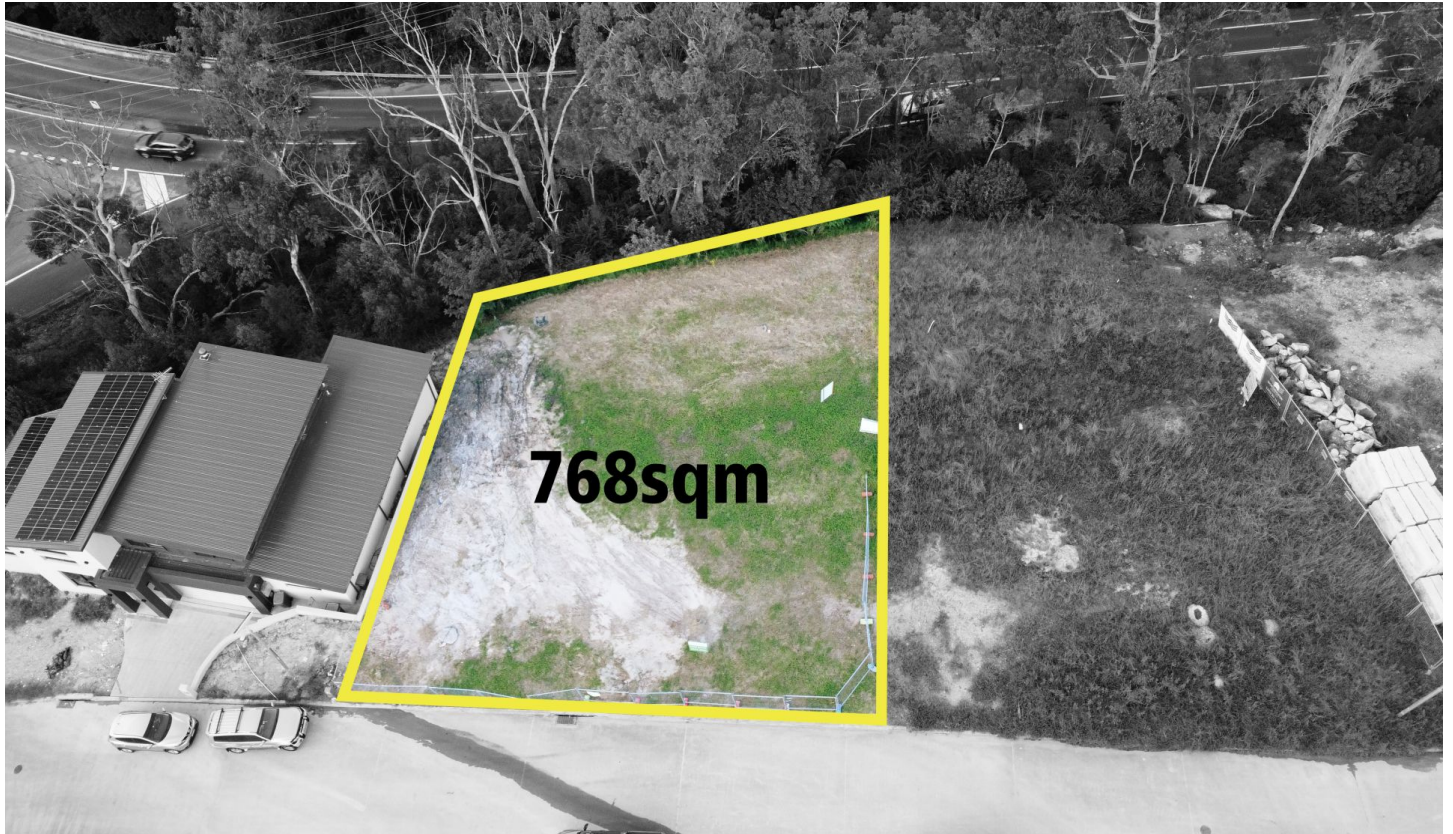




# guardian



## 6 Friends Place North Kellyville NSW

Nestled amongst a prestigious enclave of quality homes, this generous parcel is an enviable opportunity to build your dream home within the expanding North Kellyville precinct. The land is ready to be built upon, with the block offering a wide frontage suited to a variety of home types.

The address promises an ultra-convenient lifestyle with M2 bus connection just a stroll away, and local shops and Kellyville Village close by. Both Castle Towers and Rouse Hill Town Centre are only a short drive away, with the Kellyville metro station only 10 minutes down the road too.

- ? Generous 768sqm parcel
- ? Large 27m frontage, suited to a variety of home types
- ? Surrounded by other quality homes
- ? Short stroll to Bernie Mullane Sporting complex
- ? Zoned for Beaumont Hills Public School, close to William

**Price** : \$ 1,255,000  
**Land Size** : 768 sqm  
**View** : <https://www.guardianrealty.com.au/sale/nsw/hills/north-kellyville/residential/land/6969846>



**Harrison Mahaffie**  
02 9651 1666



**Ben Jobberns**  
02 9651 1666

<https://www.guardianrealty.com.au>

534 Old Northern Road Dural NSW  
02 9651 1666

