



33 Skye Court Kellyville NSW

5  2  2 

Proudly poised on the high-side of a quiet street, this generous dual level residence boasts a sought-after floorplan. The home is bright and light throughout, with the open design offering multiple zones for ultimate living and entertaining. Caesarstone benchtops frame the beautifully renovated kitchen which includes plenty of storage, a double oven and gas cooktop. Glass sliders from the meals area offer seamless transition to alfresco dining while a manicured yard has plenty of room for the kids to run and play.

The upper level features a rumpus room with built-in storage and four well-sized bedrooms. An ensuite adds an extra touch of luxury to the master suite while a modern main bathroom serves the other bedrooms. This family-friendly address is positioned within walking distance to buses, Bernie Mullane Sporting Complex and local

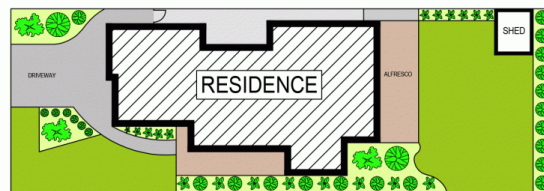
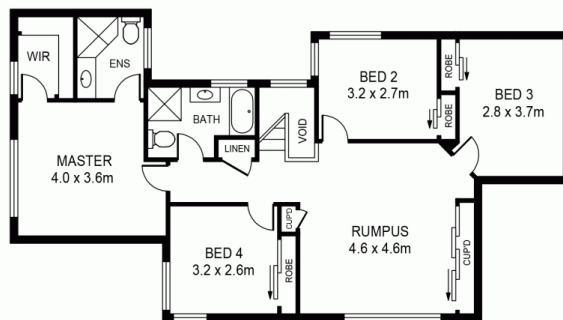
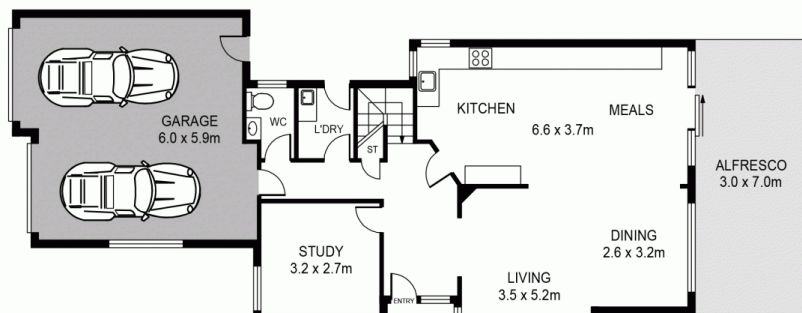
Price : \$ 1,440,000
Land Size : 456 sqm
View : <https://www.guardianrealty.com.au/sale/nsw/hills/kellyville/residential/house/6927751>



Simon Kowald
0407 433 660



Luke Browning
0431 378 280



33 SKYE COURT, KELLYVILLE

DISCLAIMER:

PLANS SHOWN ARE FOR MARKETING PURPOSES ONLY. ALL DIMENSIONS ARE APPROXIMATE AND NOT TO SCALE. THEY ARE SUBJECT TO ERRORS AND INACCURACIES AND NO LIABILITY WILL BE ACCEPTED. INTERESTED PARTIES SHOULD MAKE THEIR OWN INQUIRIES.

guardian
realty