



48 Drysdale Circuit Beaumont Hills NSW

5  2  3 

For the first time on the market, spread over a striking dual level design, this spacious residence is a delightful choice for growing families. Boasting open plan living and dining zones on the lower level, there is plenty of room to spread out and relax. Granite benchtops frame the centrally positioned gourmet kitchen which features a walk-in pantry, gas cooktop and plenty of bench space. Also ticking the box as an entertainer's paradise, the floorplan offers easy flow to a gorgeous rear decking with a built-in barbecue area. The backyard also includes a resort-style and solar-heated saltwater pool, spa and grassed area for the kids to play.

The upper level of the home features five generously-sized bedrooms with integrated storage. An ensuite serves the master suite while a neat main bathroom serves the other accommodation. This leafy address is close to Kellyville

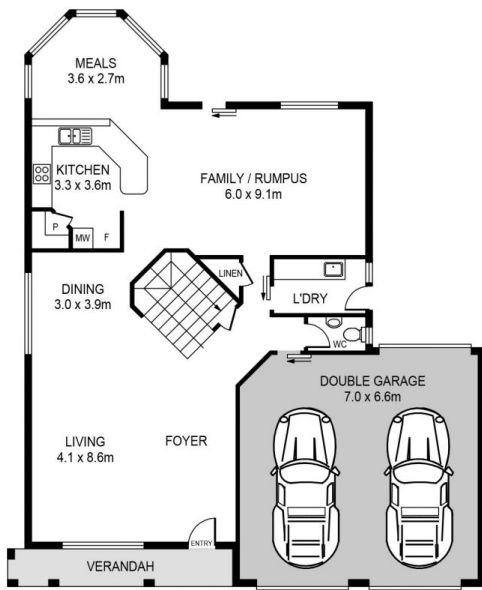
Price : \$ 1,900,000
Land Size : 636 sqm
View : <https://www.guardianrealty.com.au/sale/nsw/hills/beaumont-hills/residential/house/6890833>



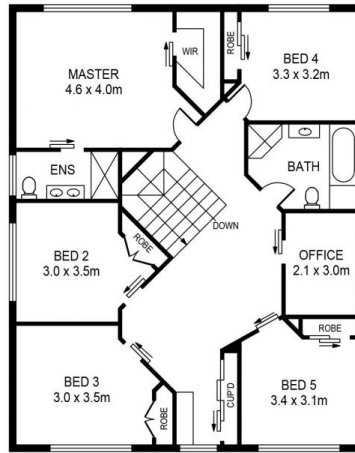
Grant McEnally
0414 968 460



Katia Serra
0474 899 383



GROUND FLOOR



FIRST FLOOR



SITE PLAN

48 DRYSDALE CIRCUIT, BEAUMONT HILLS

DISCLAIMER:

PLANS SHOWN ARE FOR MARKETING PURPOSES ONLY. ALL DIMENSIONS ARE APPROXIMATE AND NOT TO SCALE. THEY ARE SUBJECT TO ERRORS AND INACCURACIES AND NO LIABILITY WILL BE ACCEPTED. INTERESTED PARTIES SHOULD MAKE THEIR OWN INQUIRIES.



guardian
realty