



1 Daintree Place Kellyville NSW

6  2  2 

Set in a leafy cul-de-sac with views of a quiet reserve, this dual level home boasts a versatile and family friendly floorplan. The lower level opens to multiple living zones with a formal lounge and dining zone to the right of the entrance offering plenty of space for entertaining guests. A rear family room enjoys dual access points to the landscaped backyard and entertainer's patio. Full of renovation potential, the large kitchen includes a built-in pantry, ample bench space and a gas cooktop.

The upper level of this generous family home features five oversized bedrooms with integrated storage to each. An ensuite adds a touch of luxury to the master suite while a practical two-way main bathroom serves the other bedrooms. An additional bedroom on the ground floor has potential for a guest bedroom or home office. This peaceful address is moments from Bernie Mullane Sporting

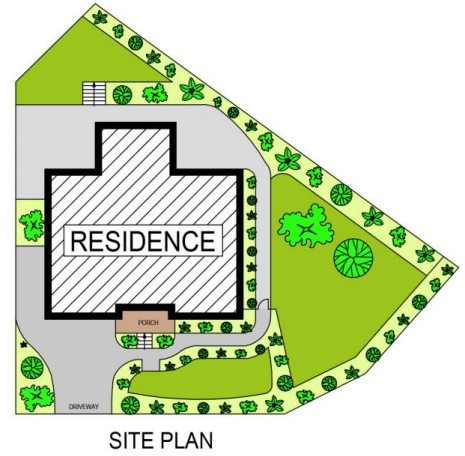
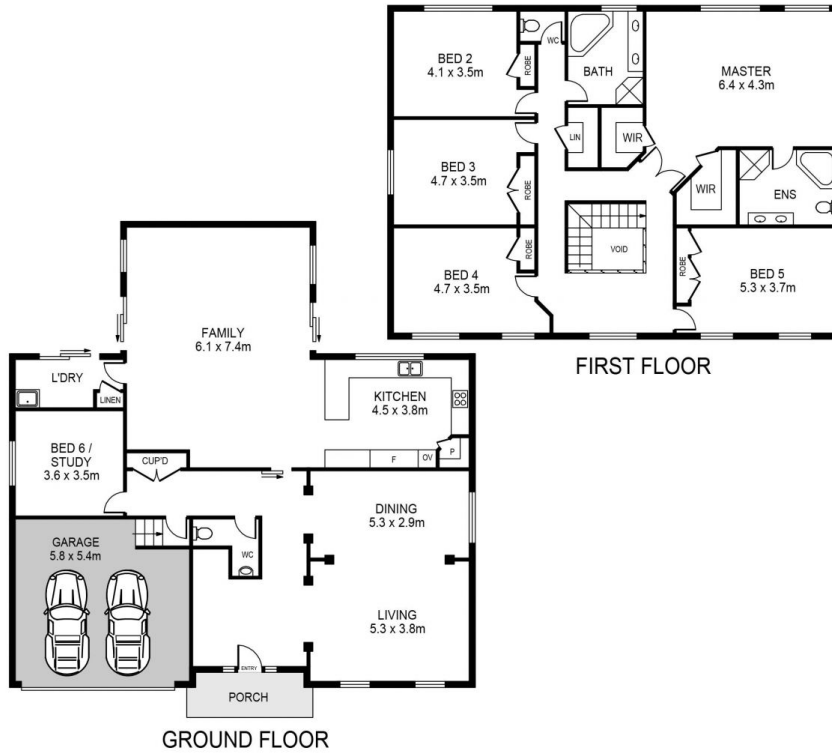
Price : \$ 1,820,000
Land Size : 754.2 sqm
View : <https://www.guardianrealty.com.au/sale/nsw/hills/kellyville/residential/house/6886185>



Luke Bavaro
0488 093 292



Simon Kowald
0407 433 660



1 DAINTREE PLACE, KELLYVILLE

DISCLAIMER:
 PLANS SHOWN ARE FOR MARKETING PURPOSES ONLY. ALL DIMENSIONS ARE APPROXIMATE AND NOT TO SCALE. THEY ARE SUBJECT TO ERRORS AND INACCURACIES AND NO LIABILITY WILL BE ACCEPTED. INTERESTED PARTIES SHOULD MAKE THEIR OWN INQUIRIES.



guardian
 realty