



11 Tecoma Drive Glenorie NSW

4  2  2 

Boasting a popular Glenorie Village address, this sun-soaked, single level home presents a flexible floorplan full of potential. Large windows allow incredible natural light through the home, with a spacious living and dining zone to the right of the entrance offering a relaxed family space. A large kitchen is set centrally to the living area and features a built-in pantry modern stainless-steel cooking appliances and plenty of storage. Double French doors open from the dining zone to a rear veranda and shaded seating area to enjoy the landscaped gardens.

Four well-sized bedrooms make up the formal accommodation of the home, with three of the bedrooms inclusive of integrated storage. The master suite enjoys the luxury of an ensuite while a large main bathroom featuring floor-to-ceiling tiles and a bathtub serves the home. With Glenorie Public School and Glenorie Village both just a

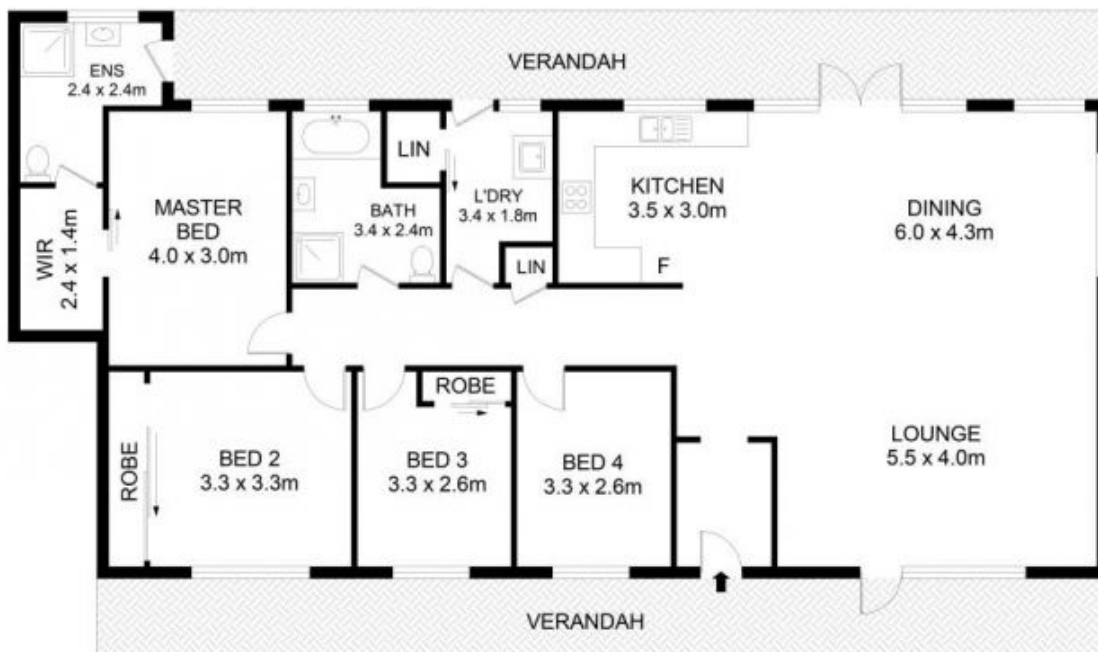
Price : \$ 1,470,000
Land Size : 810 sqm
View : <https://www.guardianrealty.com.au/sale/nsw/hills/glenorie/residential/house/6845027>



Joel Green
0408 293 262



Kristian Danckert
0402 686 943



11 Tecoma Drive, Glenorie



Disclaimer

Floor Plan measurements are approximate and are for illustrative purposes only. While we cannot doubt the floor plans accuracy, we make no guarantee, warranty or representation as to the accuracy and completeness of the floor plan.

