



# guardian



## 4/59A Castle Street Castle Hill NSW

3 2 2

Conveniently positioned in the heart of Castle Hill, this neat dual level townhouse offers the ultimate in low maintenance living. Spread over two sun-soaked levels, it features a generous open plan living zone with easy access to alfresco entertaining. Caesarstone benchtops frame the gourmet kitchen which overlooks the backyard and features plenty of bench space, a gas cooktop and a built-in pantry. A rear alfresco and courtyard area looks to the grassy yard, and offers the perfect place to relax with family and friends.

The upper level of the townhouse boasts three well-sized bedrooms with integrated storage and balcony access from each. A large master suite enjoys the luxury of an ensuite while a spacious main bathroom serves the other two bedrooms. This ultra-convenient address is within an easy stroll from Castle Towers, metro, buses, Castle Hill RSL,

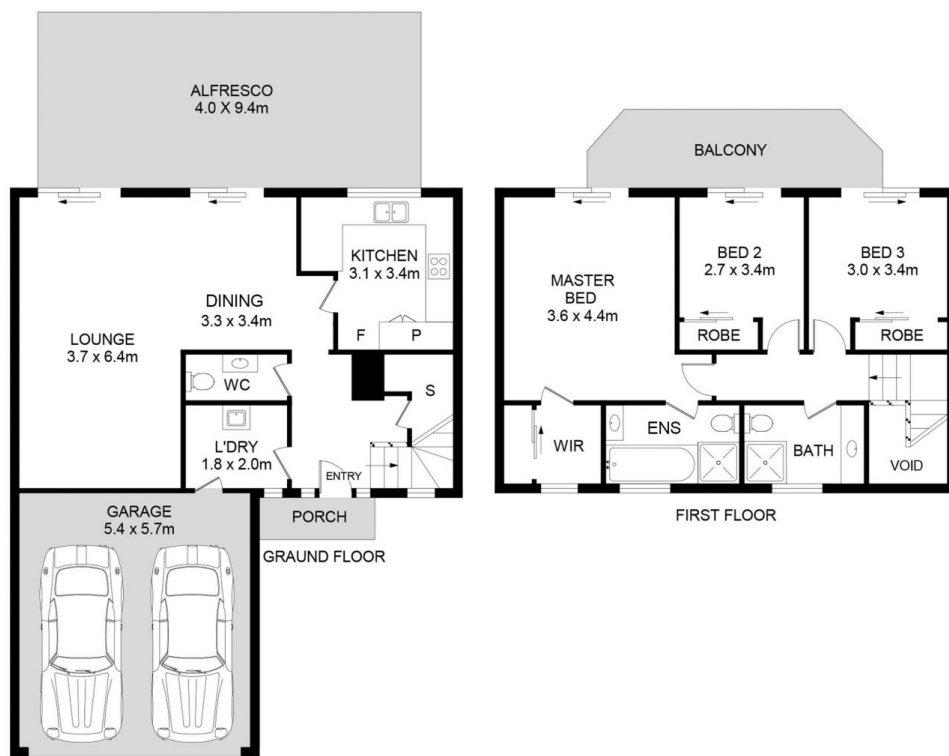
**Price** : \$ 1,310,000  
**Land Size** : 278 sqm  
**View** : <https://www.guardianrealty.com.au/sale/nsw/hills/castle-hill/residential/townhouse/6681425>



**Grant McEnally**  
0414 968 460

<https://www.guardianrealty.com.au>

258 Old Northern Road Castle Hill NSW  
02 9659 5222



4/59A Castle Street, Castle Hill

**DISCLAIMER:**

PLANS SHOWN ARE FOR MARKETING PURPOSES ONLY. ALL DIMENSIONS ARE APPROXIMATE AND NOT TO SCALE. THEY ARE SUBJECT TO ERRORS AND INACCURACIES AND NO LIABILITY WILL BE ACCEPTED. INTERESTED PARTIES SHOULD MAKE THEIR OWN INQUIRIES.



**guardian**  
realty