



guardian



19 Bimil Place Castle Hill NSW

3 2 2

Set in the heart of Castle Hill, this meticulously maintained single level home offers a low maintenance lifestyle ideal for busy professionals, families and downsizers. Bright and light throughout, a rear lounge room exudes a relaxed and private family feel while a separate dining zone makes meal times easy. Caesarstone benchtops and crisp cabinetry frame the kitchen which also includes a built-in pantry and modern stainless-steel cooking appliances. Bi-fold doors open from the internal dining zone to a beautiful alfresco ideal for enjoying time with family and friends.

Appealing to those who work from home, a separate building also positioned on the block offers a home office space or teenage retreat. Three well-sized bedrooms make up the formal accommodation of this bright single level home. The master suite enjoys the luxury of a beautiful

Price : \$ 1,550,000
Land Size : 533 sqm
View : <https://www.guardianrealty.com.au/sale/nsw/hills/castle-hill/residential/semi-detached/6579177>



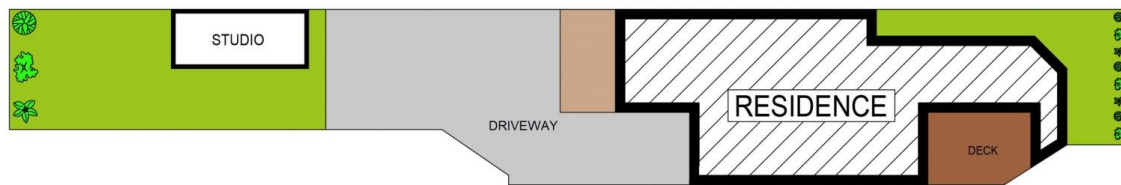
Aaron Godfrey
0422 081 888



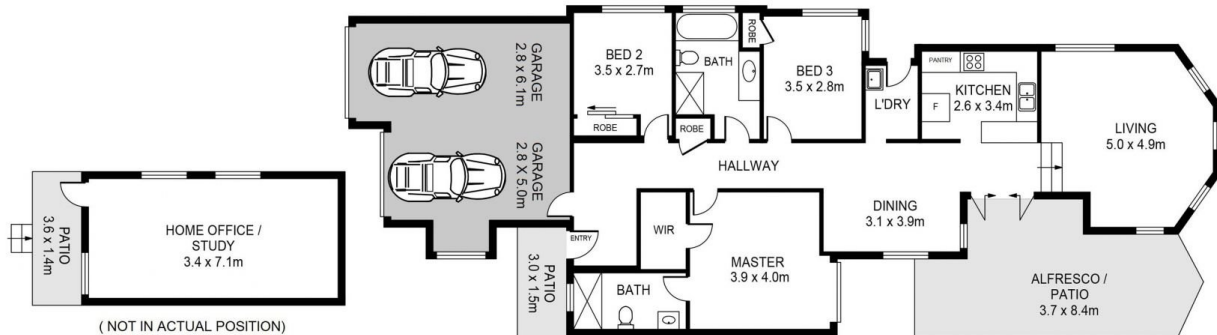
Sam Schwarz
0423 731 015

<https://www.guardianrealty.com.au>

258 Old Northern Road Castle Hill NSW
02 9659 5222



SITE PLAN



19 BIMBIL PLACE, CASTLE HILL

DISCLAIMER:

PLANS SHOWN ARE FOR MARKETING PURPOSES ONLY. ALL DIMENSIONS ARE APPROXIMATE AND NOT TO SCALE. THEY ARE SUBJECT TO ERRORS AND INACCURACIES AND NO LIABILITY WILL BE ACCEPTED. INTERESTED PARTIES SHOULD MAKE THEIR OWN INQUIRIES.