



guardian



26 Chalet Road Kellyville NSW

3 1 2

Enjoying a quiet street location within walking distance to Kellyville Public School and buses, this tidy family home promises low maintenance living. Saturated with natural light throughout the living zones and bedrooms, the home includes a generously proportioned lounge and dining area as well as a great space for outdoor entertaining. Timber flooring flows through the neat kitchen which boasts plenty of bench space and storage. Glass sliding doors open from the dining room to a large covered patio which enjoys a north-facing aspect.

Formal accommodation includes three well-sized bedrooms with built-in wardrobes and a bright main bathroom with a bathtub serves the home. The address is an easy drive from Kellyville metro, Castle Hill, Norwest Business Park and Rouse Hill.

Price : \$ 1,275,000

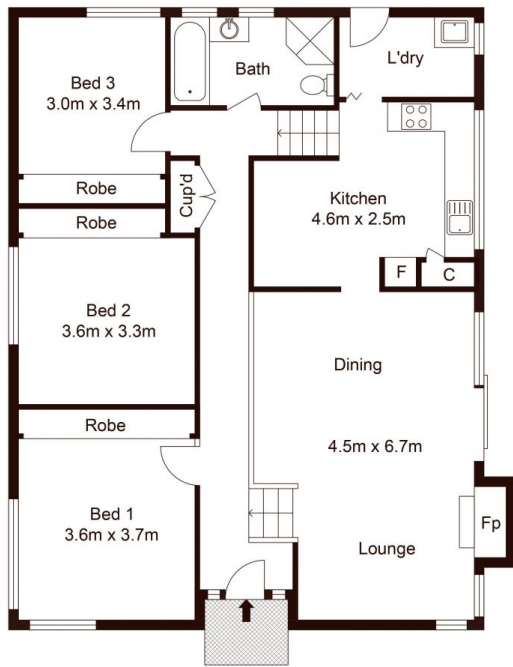
View : <https://www.guardianrealty.com.au/sale/nsw/hills/kellyville/residential/house/6352232>



Stephen Giacomelli
0413 360 777



Daniel Toms
0448 013 566



Site Plan



Scale shown in metres. All dimensions herein are approximate and gathered from sources believed to be reliable. Whilst every effort is made for the accuracy of our floor plans, interested parties should rely on their own inquiries. Floor Plan by Xorix Media.

26 Chalet Road, Kellyville



guardian
realty