



10 Ballanda Place Dural NSW

5  4  2 

The ultimate entertainer's home, this beautifully presented residence basks in over five acres of private bushland. Natural sunlight bathes the alfresco spaces and dual level layout year-round. Expansive living zones are fluid and open, positioned to take in the captivating natural landscape. An entertaining deck flows the length of the house, with double doors creating effortless movement from one space to another. Marble benches top the large gas kitchen, equipped to cater for crowds with a wraparound island bench, great storage and a plumbed fridge.

The master suite is a luxurious sanctuary with a retreat that opens to a balcony, an ensuite with spa bath and a walk-in wardrobe. Three bedrooms have built-in desks and guests or in-laws can be accommodated in the ground floor bedroom with ensuite and walk-in wardrobe. Palm trees

Price : \$ 2,520,000
Land Size : 5.6 Acres
View : <https://www.guardianrealty.com.au/sale/nsw/hills/dural/residential/house/5860422>



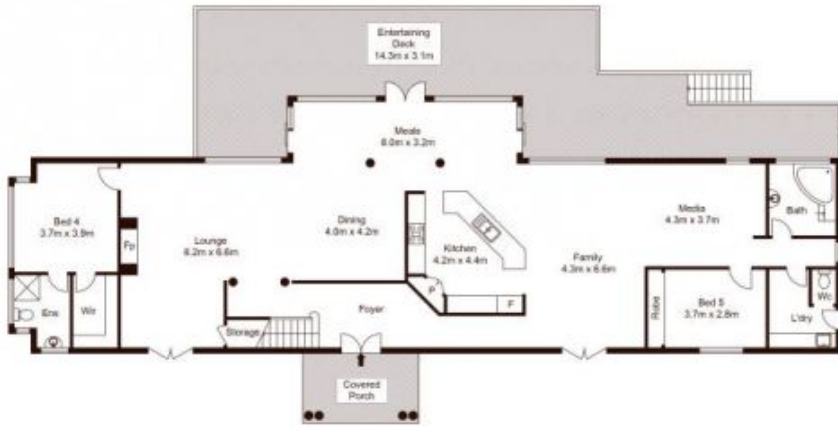
Gavin Weekley
0407 024 600



Josh McAdam
0425 886 484



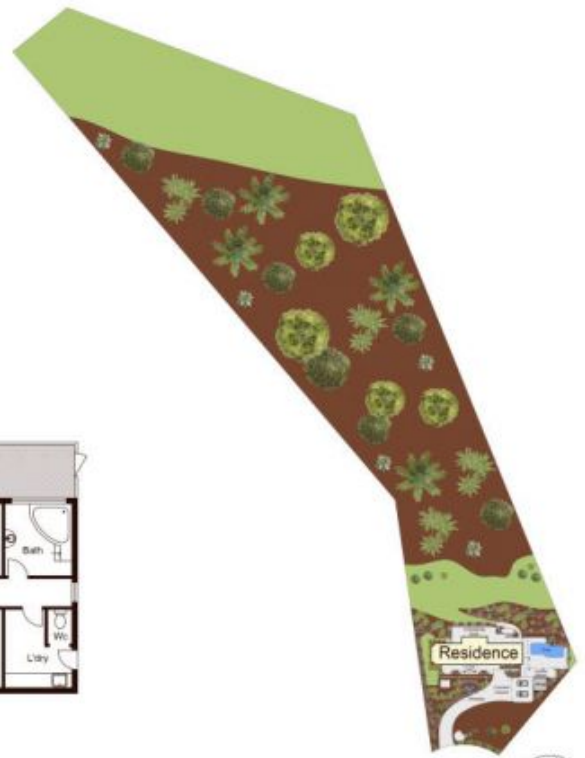
First Floor



Ground Floor



Scale shown in metres. All dimensions herein are approximate and gathered from sources believed to be reliable. Whilst every effort is made for the accuracy of our floor plans, interested parties should rely on their own inquiries. Floor Plan by Xorix Media



Site Plan



10 Ballanda Place, Dural

guardian
realty