



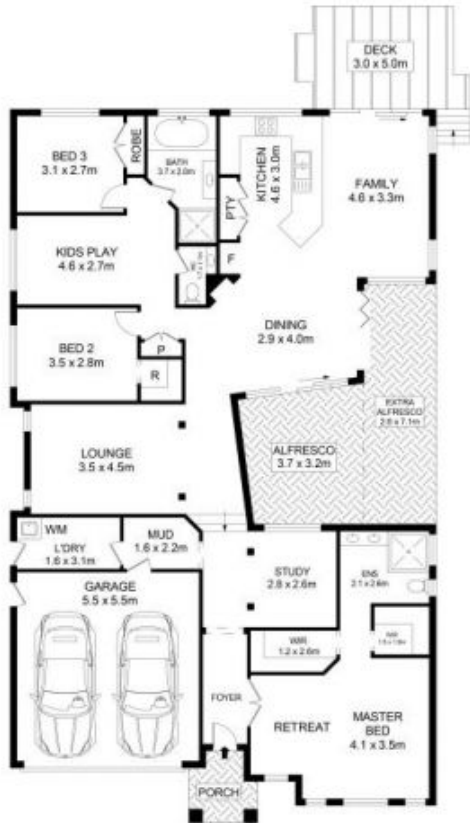
63 Sovereign Avenue Kellyville Ridge NSW

3  2  2 

Family-focused by design, this impressive home delivers space and privacy for relaxed living. Beautifully connected living zones allow room to come together and spread out, and each boasts alfresco flow. The formal lounge looks to the double travertine alfresco and the dining room has a stone-benched servery to the alfresco for flexibility when entertaining. In the stone kitchen pendant lighting illuminates bar seating and an oversized oven with gas cooktop makes cratering for a crowd simple.

A playroom separates two children's bedrooms, one of which has a walk-in wardrobe. A retreat is a highlight of the master bedroom, along with dual walk-in wardrobes and an ensuite. The mud room is a practical spot to store school bags and shoes, set next to the laundry and double garage. Situated a walk to childcare and Kellyville Ridge Public School, this exceptional home is five minutes to Rouse Hill

Price : \$ 1,085,000
Land Size : 457 sqm
View : <https://www.guardianrealty.com.au/sale/nsw/hills/kellyville-ridge/residential/house/5711647>



SITE PLAN
(NOT TO SCALE)

63 Sovereign Avenue, Kellyville Ridge

Disclaimer

Floor Plan measurements are approximate and are for illustrative purposes only. While we cannot doubt the floor plans accuracy, we make no guarantee, warranty or representation as to the accuracy and completeness of the floor plan.



guardian
realty