



22/9 Garthowen Crescent Castle Hill NSW

2  2  2 

With sweeping district views to the Blue Mountains and contemporary interiors, this apartment features 2 bedrooms with the oversized master featuring an ensuite with twin shower and dual basin vanity. With large living areas and a stylish kitchen with bar seating, glossy cabinetry and gas cooking overlooking the alfresco living area.

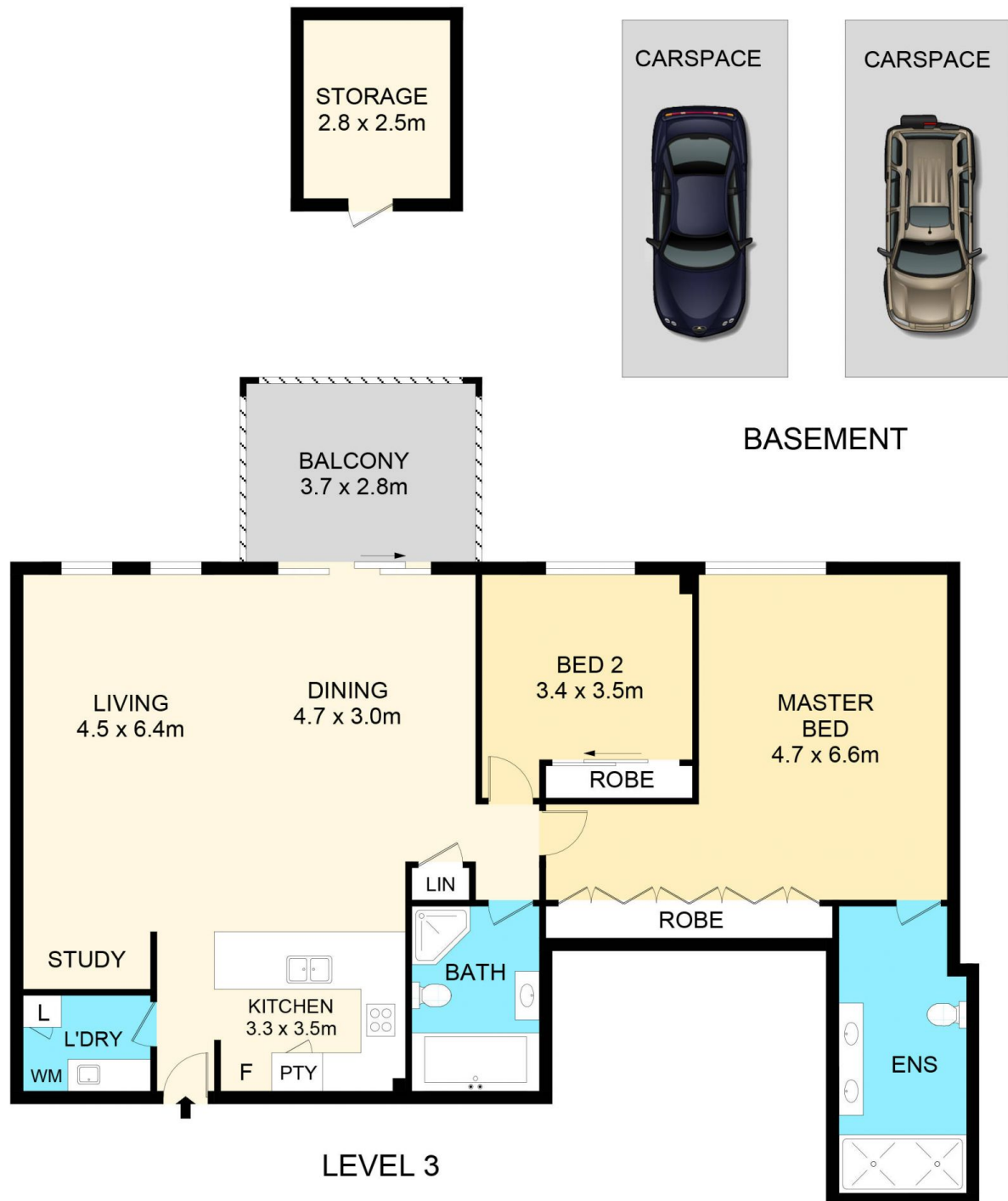
View : <https://www.guardianrealty.com.au/lease/nsw/hills/castle-hill/residential/apartment/5708946>

Additional Features:-

- Study Nook
- Ducted Air
- Plantation Shutters
- Timber Flooring flowing out to covered & private balcony
- High Ceilings
- Secure intercom entry
- Internal laundry
- 2 car spaces with storage cage



Lauren Walker
02 9651 1666



22/9 Garthowen Crescent, Castle Hill



Disclaimer

Floor Plan measurements are approximate and are for illustrative purposes only. While we cannot doubt the floor plans accuracy, we make no guarantee, warranty or representation as to the accuracy and completeness of the floor plan