



6 St Simon Place Castle Hill NSW

5  3  2 

Assured convenience and a spacious layout spilling over two levels offer family appeal in this well presented home. Open, inviting living spaces are connected and well appointed for zoning to accommodate growing families. Ample windows flood the home with natural light while family and dining rooms step out to the generous enclosed alfresco area.

A large feature window illuminates the foyer and second floor with light, where a curved balustrade hugs the upstairs living area. It connects all bedrooms, presided over by a master suite with ensuite and walk in dressing room. The unique floorplan can also allow for a home office area with separate front door entry. Footsteps to Heritage Park and four minutes to Castle Towers and trains, this elegant home occupies a central address zones for Castle Hill High School & Public School.

Price : \$ 1,500,000

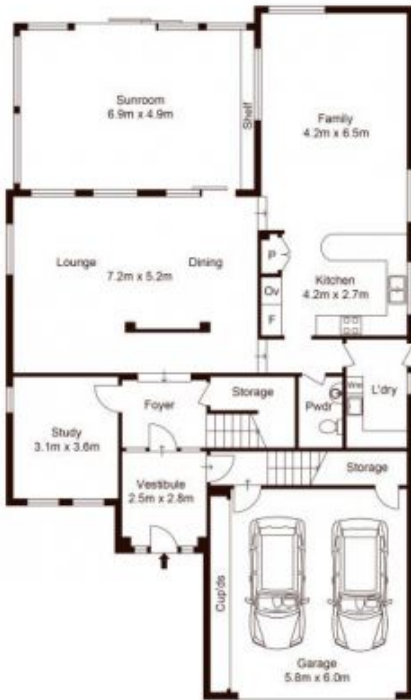
View : <https://www.guardianrealty.com.au/sale/nsw/hills/castle-hill/residential/house/5676732>



Ben Jobberns
0402 444 171



Harrison Mahaffie
0447 551 737



Ground Floor



First Floor



Site Plan



Scale shown in metres. All dimensions herein are approximate and gathered from sources believed to be reliable. Whilst every effort is made for the accuracy of our floor plans, interested parties should rely on their own inquiries. Floor Plan by Xoria Media

6 St Simon Place, Castle Hill



guardian
realty