



guardian



1 Wychwood Place Castle Hill NSW

5 3 3

Set on a corner block in a prized cul-de-sac, this generous home delivers flexible family living. Spread over a single level, it has a fantastic blend of indoor and outdoor spaces for entertaining. A skylight harnesses the natural light in the living room and there are formal dining and meals rooms. Smeg appliances feature in the granite-topped kitchen where timber cabinetry offers a wealth of storage.

Both the kitchen and a huge rumpus lead out to a deck with elevated views of the inground pool. An extensive courtyard has a gazebo and the built-in barbecue makes alfresco dining a relaxed and easy choice. A refreshed main bathroom serves three bedrooms while the master has a walk-in wardrobe and ensuite. This home is positioned a walk to buses and Knightsbridge shops, with Castle Towers and the metro five minutes away.

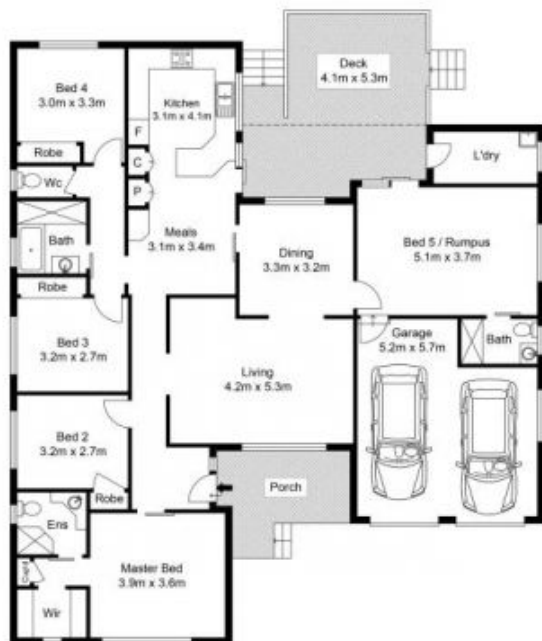
Price : \$ 1,580,000
Land Size : 930 sqm
View : <https://www.guardianrealty.com.au/sale/nsw/hills/castle-hill/residential/house/5571133>



Aaron Godfrey
0422 081 888

<https://www.guardianrealty.com.au>

258 Old Northern Road Castle Hill NSW
02 9659 5222



Site Plan



Scale shown in metres. All dimensions herein are approximate and gathered from sources believed to be reliable. Whilst every effort is made for the accuracy of our floor plans, interested parties should rely on their own inquiries. Floor Plan by Xorix Media.