



29 Johnston Street Pitt Town NSW

7  3  3 

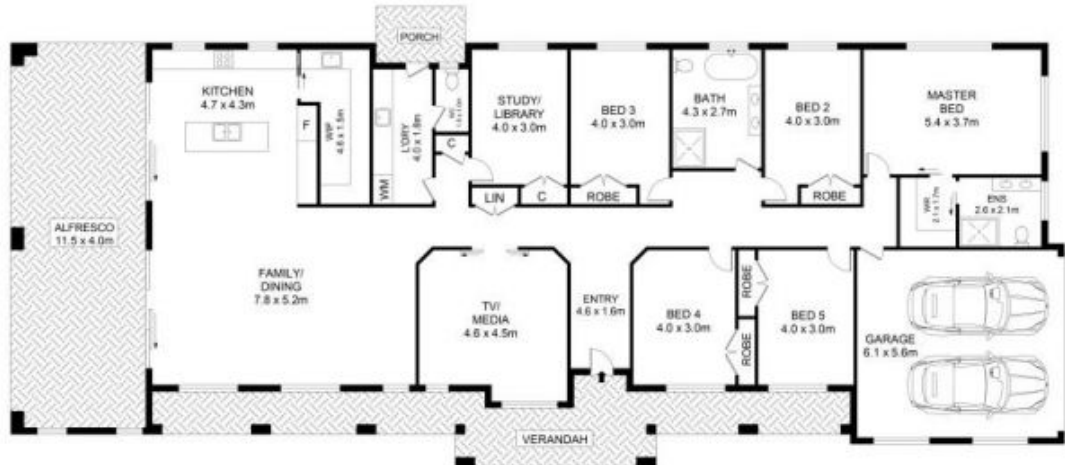
Boasting two residences on 2,027sqm, this is a standout property for multi-generational buyers. The main residence is near new with a vast layout showcasing fine finishes. Natural light pours into the open family zone, which joins a designer kitchen crafted in stone, an island bench, butler's pantry and gas cooktop. Dreamy flow from the kitchen and living area to a double alfresco make entertaining easy while a media room adds flexibility. Dual vanities come with both the main and ensuite bathrooms while the master has the convenience of a walk-in wardrobe.

In the secondary dwelling, two bedrooms, open living and a study nook offer comfortable living for in-laws or extended family. It has a carport, generous private yard and separate access from Hawkesbury Street. Side access to the main home allows for boat or tradesman's storage in the large yard, which has DA approval for a 10.5m x 7m shed with

Price : \$ 1,715,000
Building Size : 96 sqm
Land Size : 2027 sqm
View : <https://www.guardianrealty.com.au/sale/nsw/hawkesbury/pitt-town/residential/home/5562579>



SITE PLAN
(NOT TO SCALE)



27-29 Johnston Street, Pitt Town

Disclaimer

Floor Plan measurements are approximate and are for illustrative purposes only. While we cannot doubt the floor plans accuracy, we make no guarantee, warranty or representation as to the accuracy and completeness of the floor plan.



guardian
realty