



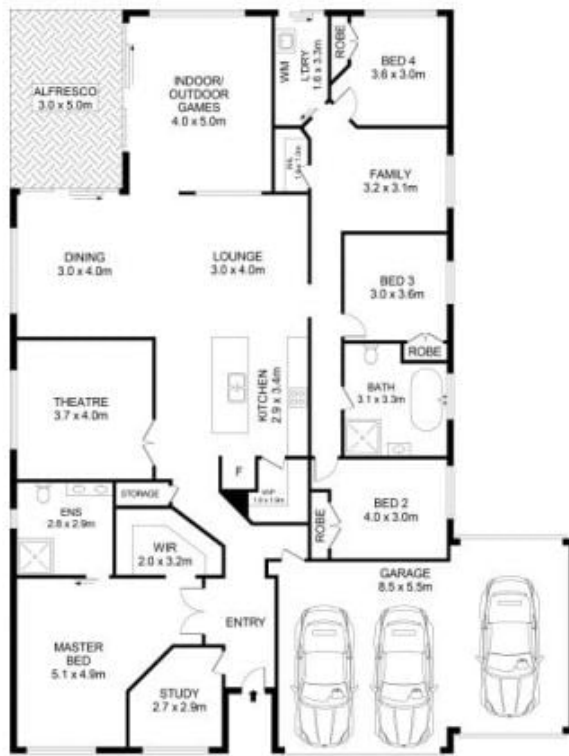
4 Esther Maria Street Pitt Town NSW

4  2  3 

Holiday vibes and an ambience of laidback simplicity emanate from this Eden Brae home. Wonderfully fluid living zones are open and north-facing, with coveted flow to a covered alfresco from two sides. Sit with a drink at the servery of the outdoor room, relax by the pristine resort pool, or unwind on the deck with friends over dinner. Stone benchtops, island seating with under bench lighting and a walk-in pantry will inspire the inner chef to entertain with style.

A luxe theatre oozes pleasure under a suspended bulkhead ceiling and a sizeable study makes the perfect working from home sanctuary. Kids have their own lounge or playroom while parents have the privacy of their own suite with a walk-in wardrobe and deluxe ensuite. The triple drive-through garage adds flexibility for boat and toy storage, with the Hawkesbury River, bushland and golf

Price : \$ 1,410,000
Land Size : 750 sqm
View : <https://www.guardianrealty.com.au/sale/nsw/hawkesbury/pitt-town/residential/house/5462315>



4 Esther Maria Street, Pitt Town

Disclaimer

Floor Plan measurements are approximate and are for illustrative purposes only. While we cannot doubt the floor plans accuracy, we make no guarantee, warranty or representation as to the accuracy and completeness of the floor plan.



guardian
realty