



8 Sorrento Court Kellyville NSW

4  2  2 

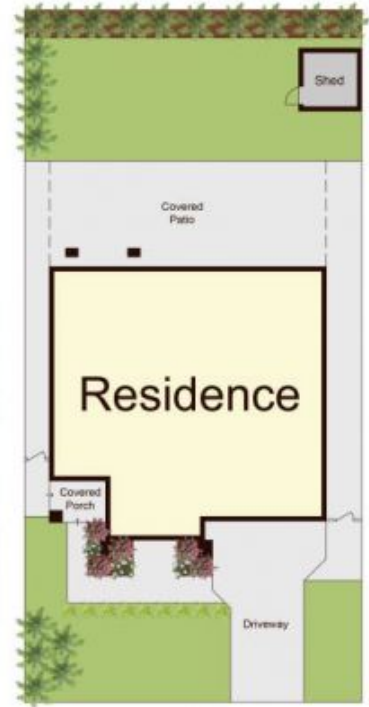
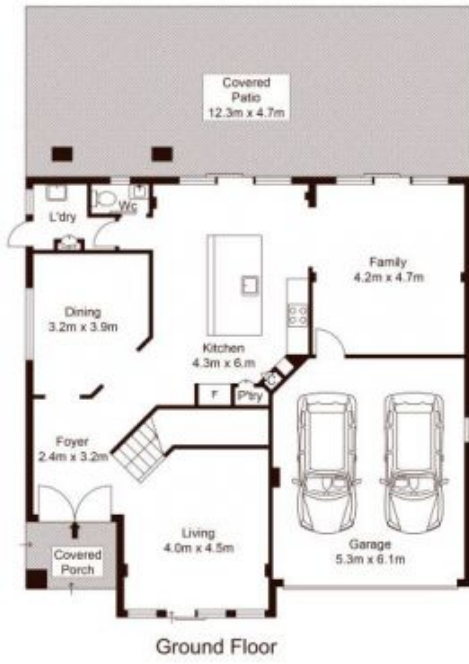
Residing in the privilege of a cul-de-sac, this refreshed home offers the utmost in convenience and low maintenance living. Its dual-level layout allows spaces for time together and apart, with all rooms illuminated in natural light. The stone kitchen is Italian made and designed, defined by a large island bench, infinity gas and an oversized gas cooktop. It leads out to a full-width patio for large-scale entertaining and merges with an expanse of artificial lawn.

Bedrooms are spread over the top floor, delivering peace and quiet. Retreat to the master suite which has an ensuite and walk-in wardrobe and steps out to a new balcony wrapped in glass. Back gate access to Samantha Riley Drive offers a shortcut to local shops and city buses, while childcare, schools and Bernie Mullane Reserve with sports centre facilities are a walk away.

Price : \$ 1,215,000
Land Size : 450 sqm
View : <https://www.guardianrealty.com.au/sale/nsw/hills/kellyville/residential/house/5310424>



Stephen Giacomelli
 0413 360 777



Scale shown in metres. All dimensions herein are approximate and gathered from sources believed to be reliable. Whilst every effort is made for the accuracy of our floor plans, interested parties should rely on their own inquiries. Floor Plan by Xorix Media.

8 Sorrento Court, Kellyville



guardian
realty