



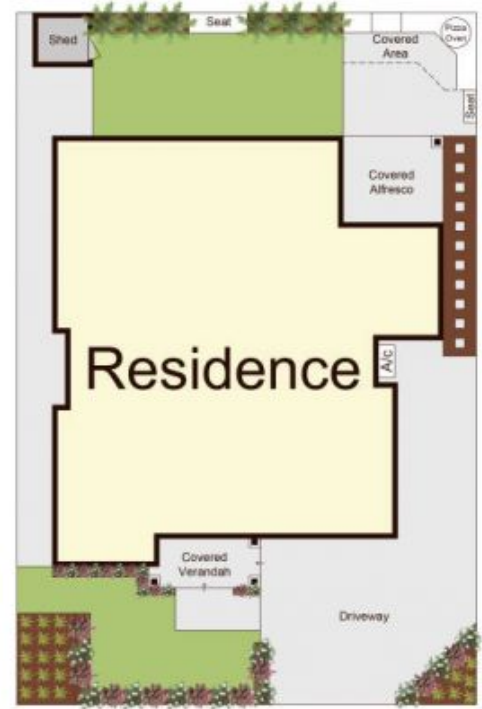
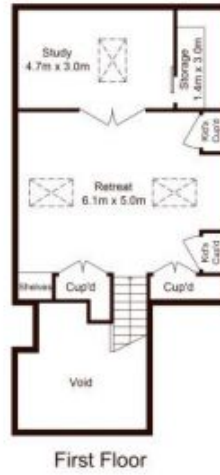
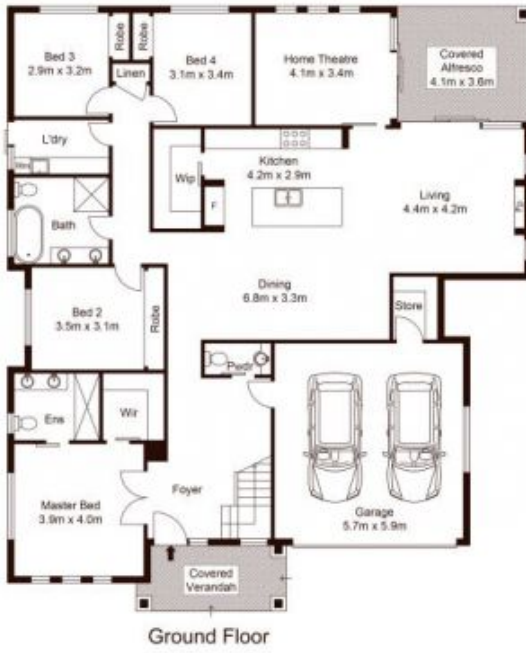
7 Vine Street Pitt Town NSW

4  2  2 

Custom built for a life of effortless ease, this Vermont Estate home is meticulously designed. Polished concrete floors and shadow line cornices affirm this home's pedigree from the moment you walk in. The central, open living zone is articulated by an eye-popping kitchen. Framed by timber, it has a waterfall edge island and a mirror splash back, topped off with a butler's kitchen for entertaining. A theatre room opens directly to a covered terrace with a pizza oven, inviting relaxed evenings with friends.

A timber and glass staircase lead up to a whole-floor retreat. Soaked in light from roof windows, its versatility is seen in its open layout, separate study and capacious storage. Striking bathrooms have dual basins with timber vanities, frameless showers and black tapware to accentuate the marbled tiles. This home's superb location is a stroll to Pitt Town Public School and local shops, with

Price : \$ 1,140,000
Land Size : 550 sqm
View : <https://www.guardianrealty.com.au/sale/nsw/hawkesbury/pitt-town/residential/house/5304808>



Scale shown in metres. All dimensions herein are approximate and gathered from sources believed to be reliable. Whilst every effort is made for the accuracy of our floor plans, interested parties should rely on their own inquiries. Floor Plan by Xorix Media.

7 Vine Street, Pitt Town



guardian
realty