



# guardian



## 30 Lisa Crescent Castle Hill NSW

7 5 5

A coveted opportunity to live in a quiet, well connected enclave, this home delivers brilliant potential to shape into a modern home. Sun kissed interiors span two floors, with bedrooms atop for maximum living space below. Formal rooms are open and set apart from the family room with wet bar at the rear. It steps out to an enclosed alfresco room where slate tiles and a rock garden offer a unique ambience.

At the rear of the property sits a two bedroom, two bathroom granny flat with a two car garage. It boasts its own address and driveway and has a lovely landscaped courtyard, giving occupants absolute privacy to live independently. Positioned a four minute stroll to city and local buses, 10 minutes to Samuel Gilbert Public School, and a 15 minute walk to Showground station, this is an extraordinary find with so much to offer.

**Price** : \$ 1,700,000  
**Land Size** : 928 sqm  
**View** : <https://www.guardianrealty.com.au/sale/nsw/hills/castle-hill/residential/house/5273365>



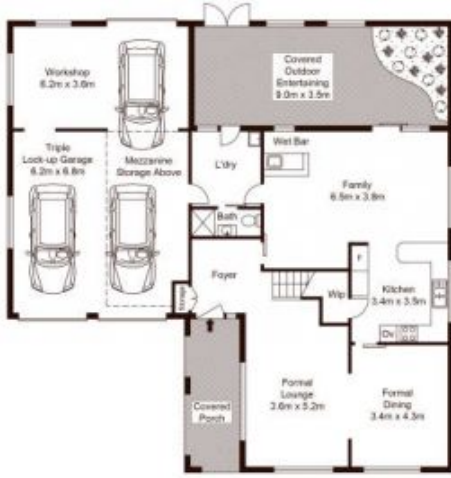
**Aaron Godfrey**  
0422 081 888

<https://www.guardianrealty.com.au>

258 Old Northern Road Castle Hill NSW  
02 9659 5222



Granny Flat



Ground Floor



First Floor



Site Plan



Scale shown in metres. All dimensions herein are approximate and gathered from sources believed to be reliable. Whilst every effort is made for the accuracy of our floor plans, interested parties should rely on their own inquiries. Floor Plan by Xorix Media.

30 Lisa Crescent, Castle Hill



guardian  
realty